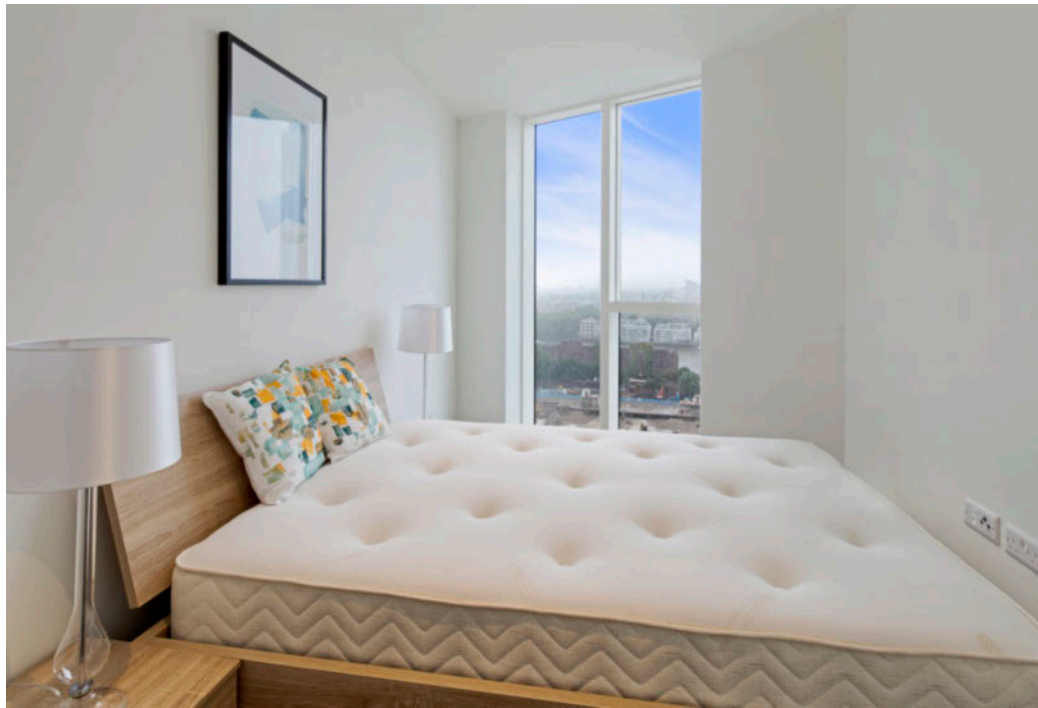


Sky Gardens, Wandsworth Road, Nine Elms, SW8

Price **£725 per week** | Furnished



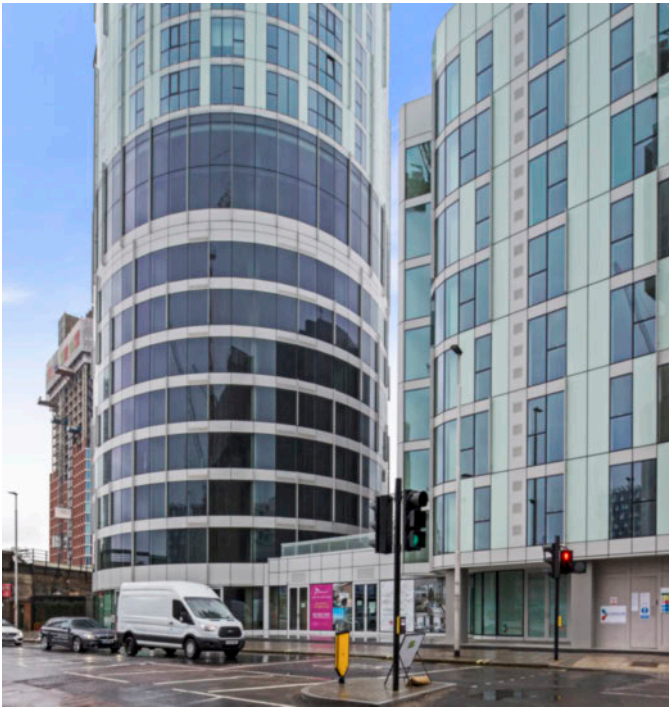
Sky Gardens, Wandsworth Road, Nine Elms, SW8

-  2 Bedrooms
-  2 Bathrooms
-  1 Reception
-  Winter Garden
-  Gymnasium
-  Local Amenities
-  24-Hour Concierge
-  0.1 MI Nine Elms

A two bedroom, two bathroom apartment set within Sky Gardens; a modern development located in Nine Elms. This designer furnished apartment includes an open plan living and dining area, fitted kitchen with integrated Smeg appliances, wood flooring, floor-to-ceiling windows, fitted bedroom storage, master en suite, stylish family bathroom and a winter garden.

Residents also have access to a 24-hour concierge service, eighth floor gymnasium and landscaped communal gardens. There are several amenities located nearby including restaurants, shops and

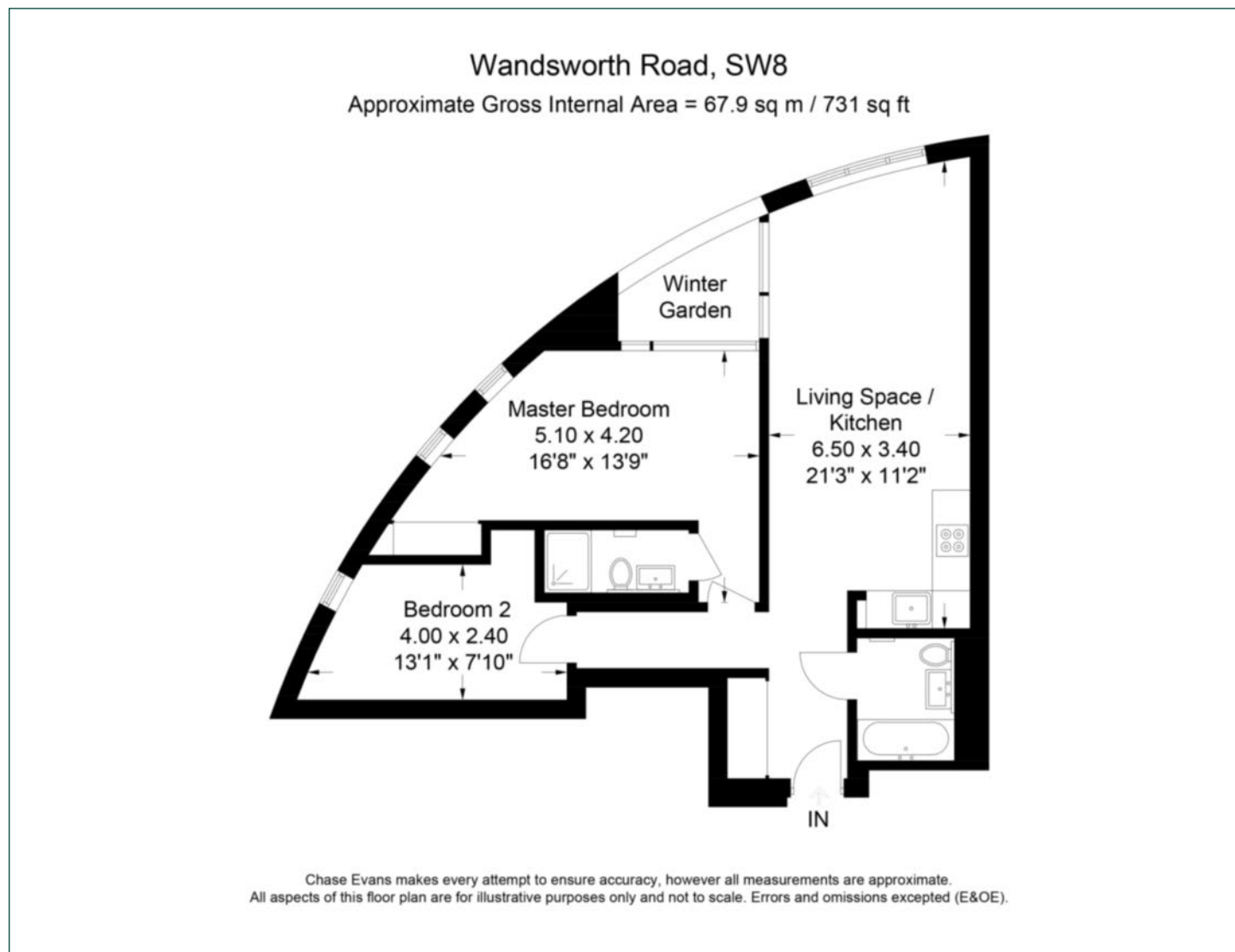
cafés. Vauxhall Park offers a great amount of green space for quiet walks or leisure activities. The development is located near to Vauxhall station, providing several transport services for commutes across the Capital.



Local Authority:	Lambeth London
Council Tax Band:	F
EPC:	B
Security deposit:	equivalent to 5 weeks' rent

Floorplan

731 sq ft | 67.9 sq m



Elephant & Castle

One The Elephant, 5 St Gabriel Walk, London, SE1 6FA

Lettings

020 3869 2888 | eandc.lettings@chaseevans.com

We're here to help.

IMPORTANT NOTICE - These particulars have been prepared in good faith and they are not intended to constitute part of an offer or contract. We have not performed a structural survey on this property and the services, appliances and specific fittings have not been tested. All photographs, measurements, floor plans and distances referred to are given as a guide and should not be relied upon.

chaseevans.com

 Chase Evans