

## Cleveland Street, Fitzrovia, W1T

Asking price **£2,000,000** | Leasehold



# Cleveland Street, Fitzrovia, W1T

-  2 Bedrooms
-  2 Bathrooms
-  1 Reception
-  2 Balconies
-  Gymnasium
-  Local Amenities
-  24-Hour Concierge
-  0.1 MI Waterloo

This recently completed, modern two-bedroom, two-bathroom property with secure underground parking and two balconies is set on the third floor of 101 Cleveland Street development in Fitzrovia.

Spanning 948 sq. ft / 88.01 sq.m internally, the property has a spacious, bright and elegant open-plan kitchen/living room/lounge which opens out onto a balcony overlooking private gardens. The master bedroom has an ensuite bathroom and with access to its own balcony, and there is a further double bedroom and the second bathroom with a shower located in the hallway.

The stylish interior features high ceilings, large windows, comfort cooling and underfloor heating. Exquisite materials, bespoke finishes and timber flooring are found throughout the property. The kitchen has bespoke cabinetry, worktops, marble splashback, high-end fully integrated appliances. The master bedroom is spacious with both, tub and a walk-in shower.

The secure parking space comes with a private EV charger, and the property has an additional, separate storage space within the development. Amenities available to residents include a 24-hour concierge, access to a gym, sauna, screening and dining room, resident's bar, and a lounge.

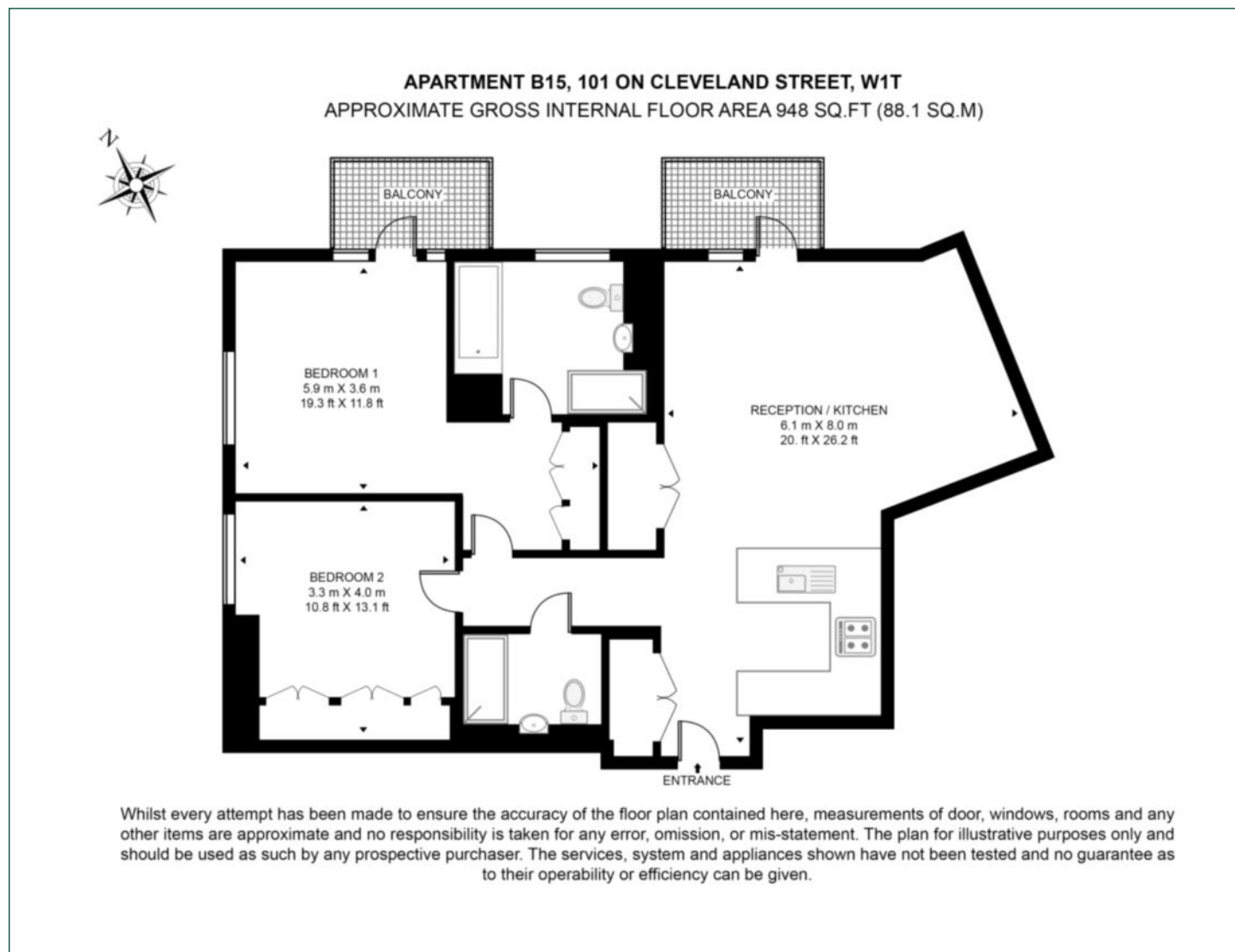


<b>Tenure:</b>	Leasehold (245 years remaining)	<b>Local Authority:</b>	City of Westminster
<b>Ground Rent:</b>	£500 p.a.	<b>Council Tax Band:</b>	G
<b>Service Charge:</b>	£12,542.74 p.a.	<b>EPC:</b>	B



# Floorplan

948 sq ft | 88 sq m



## City & Aldgate

122 Whitechapel High Street, London, E1 7PT

## Sales

020 7488 2777 | [city.sales@chaseevans.com](mailto:city.sales@chaseevans.com)

## We're here to help.

IMPORTANT NOTICE - These particulars have been prepared in good faith and they are not intended to constitute part of an offer or contract. We have not performed a structural survey on this property and the services, appliances and specific fittings have not been tested. All photographs, measurements, floor plans and distances referred to are given as a guide and should not be relied upon.

[chaseevans.com](https://chaseevans.com)

 Chase Evans