





Satin House, Goodman's Fields, Piazza Walk, Aldgate, E1

Price **£750 per week** | Furnished



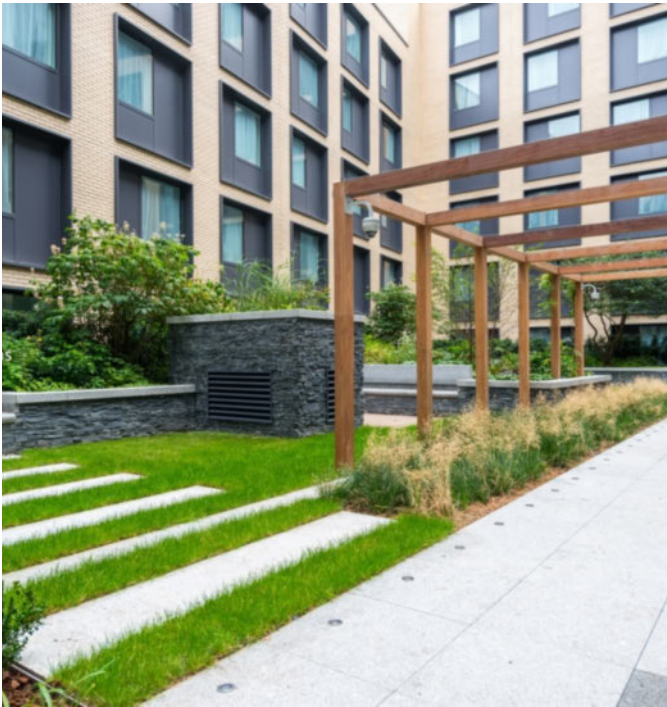
Satin House, Goodman's Fields, Piazza Walk, Aldgate, E1

-  1 Bedroom
-  2 Bathrooms
-  1 Reception
-  Winter Garden
-  Gymnasium
-  Local Amenities
-  24-Hour Concierge
-  0.1 MI Aldgate East

A luxury one bedroom apartment set within Satin House; within the Goodman's Fields development. This furnished apartment includes an open plan living area, fitted foldaway bed with storage and partition for second sleeping area, fitted kitchen with integrated appliances, dual-aspect views, master en suite, modern shower room suite and a winter garden.

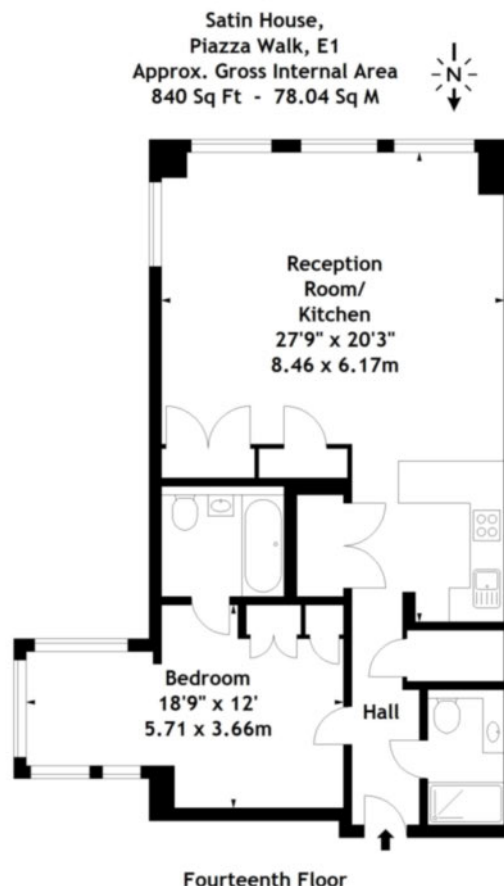
Residents also have access to a 24-hour concierge service, private gymnasium, swimming pool, spa facilities, private cinema, two acres of communal gardens and a business lounge.

Local Authority:	Tower Hamlets
Council Tax Band:	E
EPC:	C
Security deposit:	equivalent to 5 weeks' rent



Floorplan

840 sq ft | 78.04 sq m



Measured in accordance with RICS guidelines. Every attempt is made to ensure accuracy, however all measurements are approximate. This floor plan is for illustrative purposes only and is not to scale.
© Datagraphy Ltd 2016
Photographs * Floorplans * Virtual Tours
Tel: 0845 643 4401 www.datagraphy.com

City & Aldgate

122 Whitechapel High Street, London, E1 7PT

Lettings

020 7247 3888 | city.lettings@chaseevans.com

We're here to help.

IMPORTANT NOTICE - These particulars have been prepared in good faith and they are not intended to constitute part of an offer or contract. We have not performed a structural survey on this property and the services, appliances and specific fittings have not been tested. All photographs, measurements, floor plans and distances referred to are given as a guide and should not be relied upon.

chaseevans.com

 Chase Evans