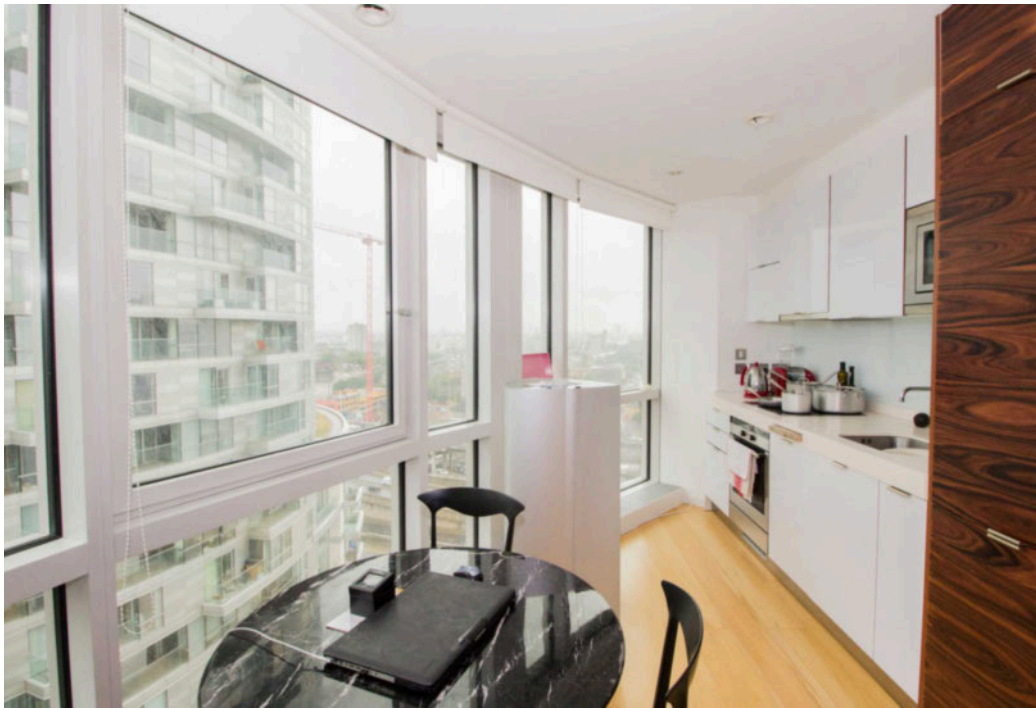




Ontario Tower, Fairmont Avenue, Canary Wharf, E14

Price **£525 per week** | Furnished



Ontario Tower, Fairmont Avenue, Canary Wharf, E14



1 Bedroom



1 Bathroom



1 Reception



Gym



Leisure Facilities



24-Hour Concierge



0.4 MI Blackwall

Modern one bed apartment set within Ontario Tower, Canary Wharf E14. This large one bed comprises a light, open-plan living space with floor to ceiling windows with stunning views of Canary Wharf. The living space is complimented by an open plan kitchen/dining area with a modern fitted & integrated kitchen. Spacious double bedroom and contemporary marble bathroom suite.

Ontario Tower residents benefit from gym and leisure facilities, 24-hour concierge service and a convenient location close to Canary Wharf and its amenities. Situated less than half a mile from both

Blackwall and East India DLR stations and 0.7 miles from Canary Wharf underground provides access to DLR and Jubilee line services, including the high-speed Crossrail (Elizabeth Line) service which will see Tottenham Court Road and Heathrow Airport reached in 11 and 39 mins respectively.

Local Authority:

Tower Hamlets

Council Tax Band:

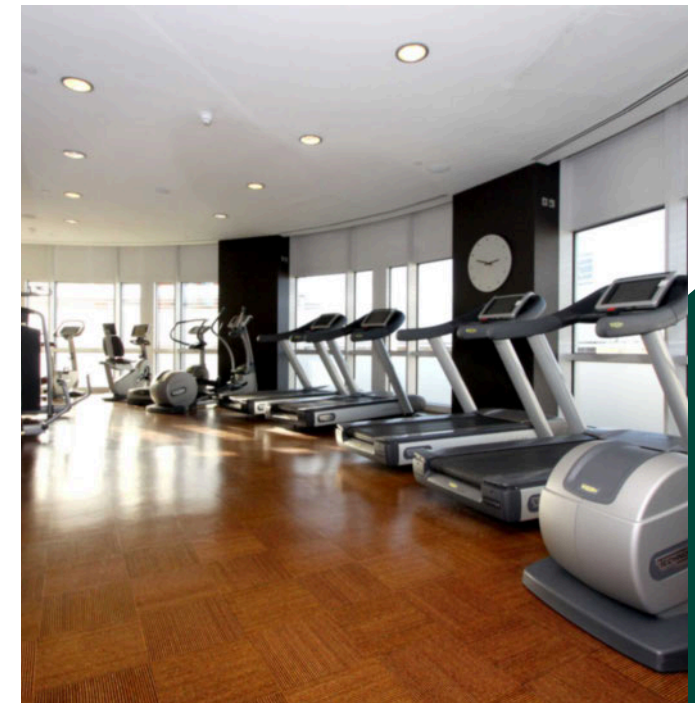
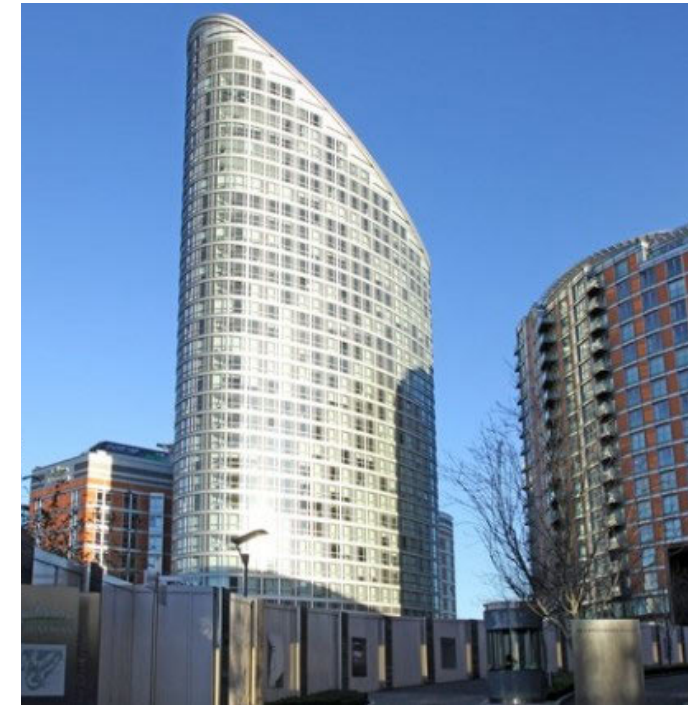
D

EPC:

C

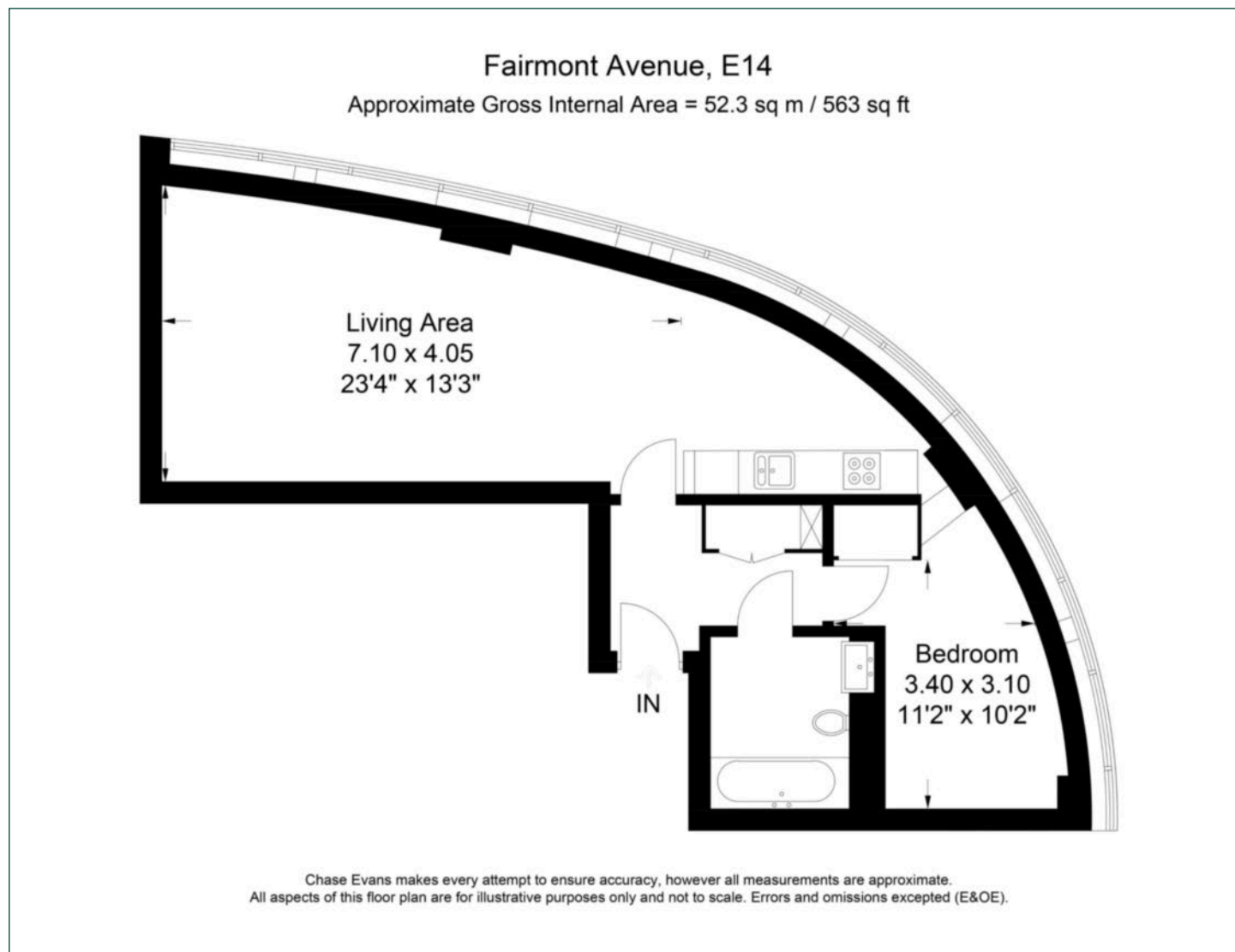
Security deposit:

equivalent to 5 weeks' rent



Floorplan

563 sq ft | 52.3 sq m



Pan Peninsula

Pan Peninsula, 1 Millharbour, London, E14 9XP

Lettings

020 7536 7900 | panp.lettings@chaseevans.com

We're here to help.

IMPORTANT NOTICE - These particulars have been prepared in good faith and they are not intended to constitute part of an offer or contract. We have not performed a structural survey on this property and the services, appliances and specific fittings have not been tested. All photographs, measurements, floor plans and distances referred to are given as a guide and should not be relied upon.

chaseevans.com

 Chase Evans