











Silverleaf House, The Verdean, Acton, W3

Price **£450 per week** | Furnished



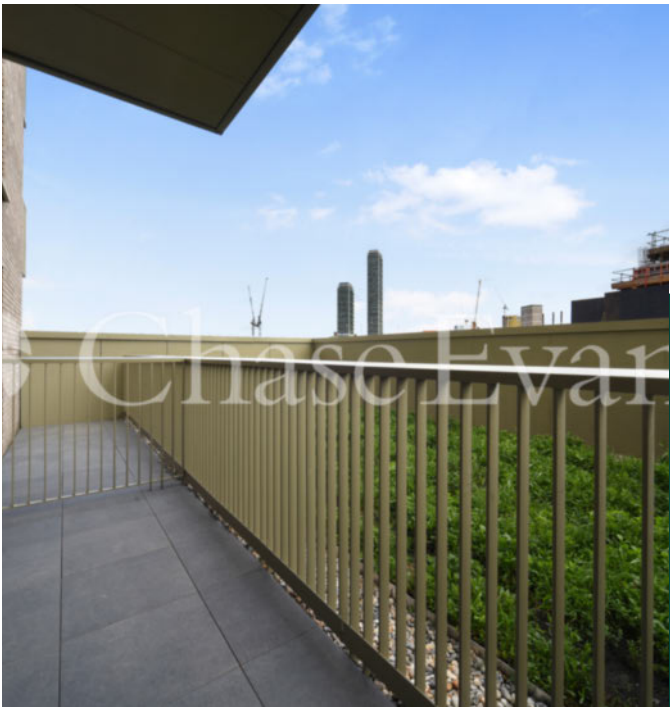
Silverleaf House, The Verdean, Acton, W3

-  1 Bedroom
-  1 Bathroom
-  1 Reception
-  Private Balcony
-  Fitness Facilities
-  Communal Gardens
-  24-Hour Concierge
-  0.2 MI Acton Main Line

Brand new one-bedroom apartment set in the impressive The Verdean development close to Acton Main Line Station and Elizabeth Line in Acton W3. The bright open-plan kitchen/living room extends onto a balcony and features light timber effect flooring and stylish cabinetry. There is a sizeable bedroom with a fitted wardrobe and a smart bathroom.

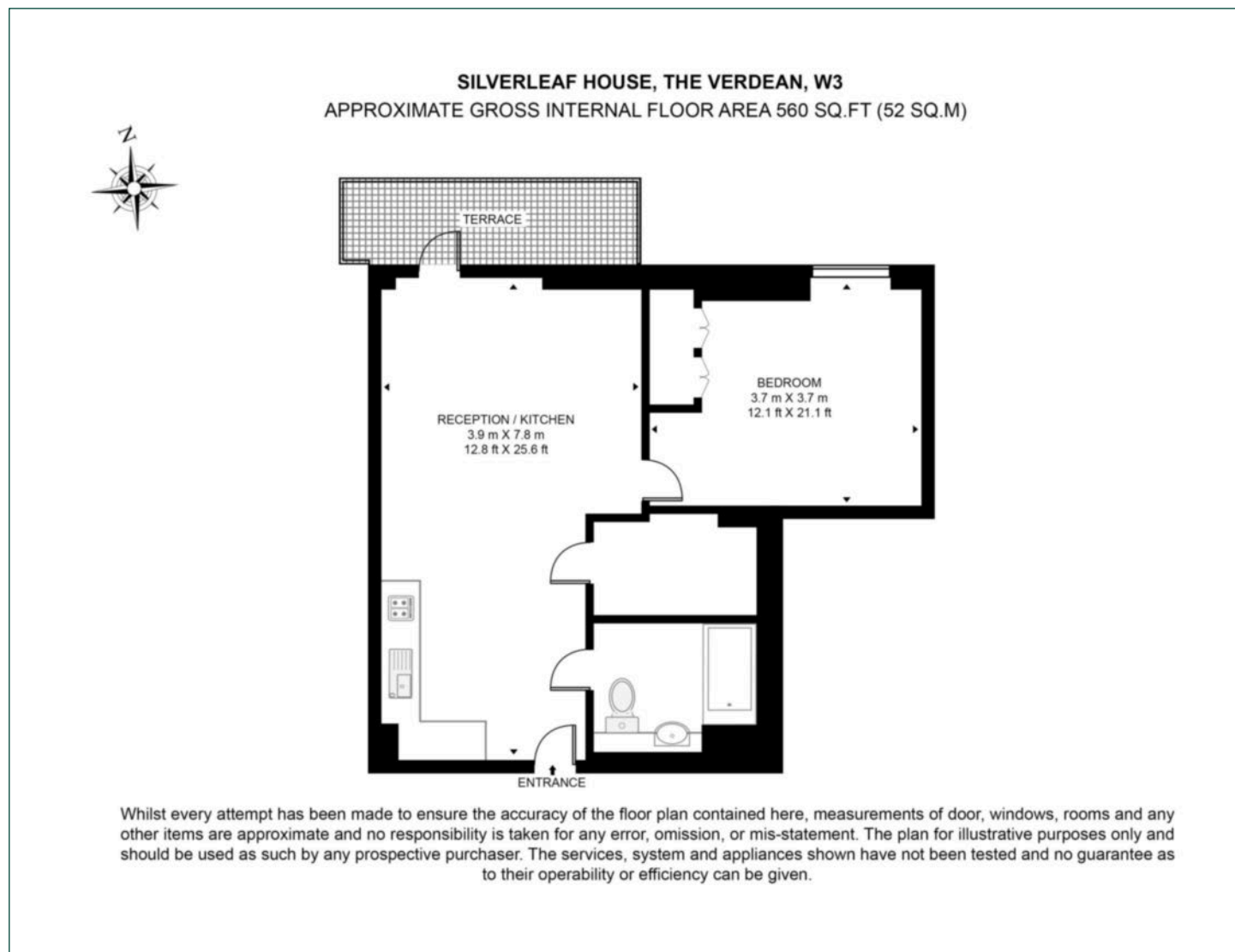
The Verdean development offers 24-hour concierge services, and access to onsite fitness facilities which is to be completed in 2026, a business lounge, communal terraces and landscaped gardens, and

Local Authority:	Ealing
Council Tax Band:	C
EPC:	B
Security deposit:	equivalent to 5 weeks' rent



Floorplan

560 sq ft | 52.0 sq m



City & Aldgate

122 Whitechapel High Street, London, E1 7PT

Lettings

020 7247 3888 | city.lettings@chaseevans.com

We're here to help.

IMPORTANT NOTICE - These particulars have been prepared in good faith and they are not intended to constitute part of an offer or contract. We have not performed a structural survey on this property and the services, appliances and specific fittings have not been tested. All photographs, measurements, floor plans and distances referred to are given as a guide and should not be relied upon.

chaseevans.com

 Chase Evans