




North Boulevard, Baltimore Wharf, Canary Wharf, E14

Price **£495 per week** | Furnished



North Boulevard, Baltimore Wharf, Canary Wharf, E14

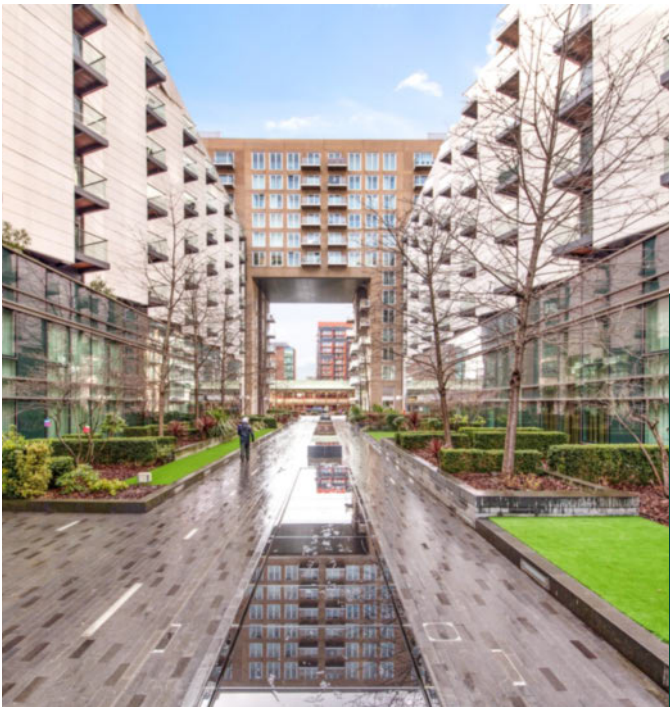
-  1 Bedroom
-  1 Bathroom
-  1 Reception
-  Terrace
-  Gymnasium
-  Local Amenities
-  24-Hour Concierge
-  0.2 MI South Quay

A modern one bedroom, furnished apartment situated within walking distance of Canary Wharf. This bright property boasts approximately 537 sq ft of living space and features high specification throughout, access to a communal garden, wooden flooring to the hallway, plus open plan kitchen with dishwasher and washing machine.

Residents have access to 24-hour concierge services plus an onsite gymnasium and swimming pool. The property is located close to Canary Wharf for all local amenities, such as shops, bars and restaurants.

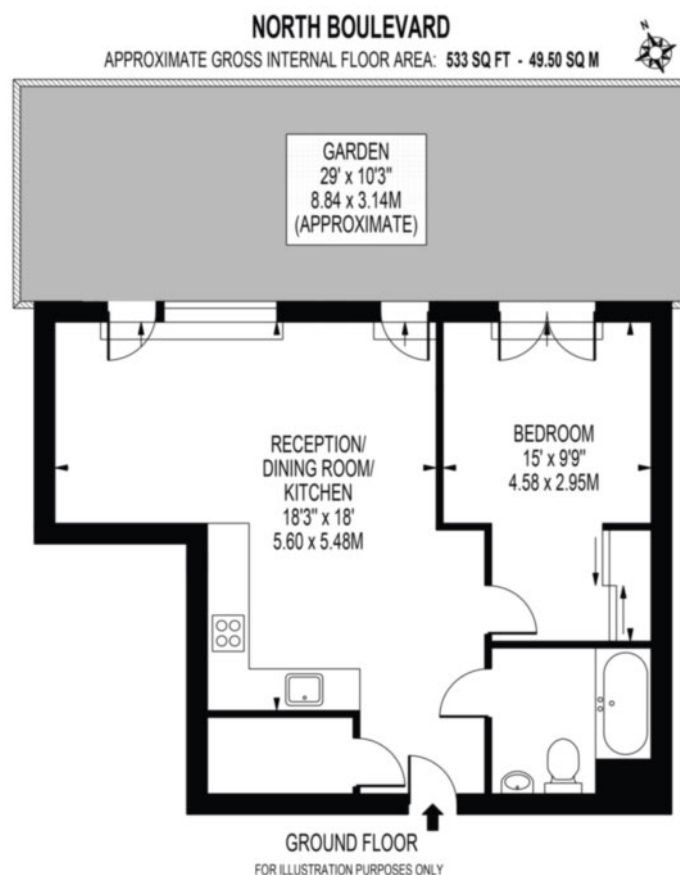
Local Authority:	Tower Hamlets
Council Tax Band:	G
EPC:	C
Security deposit:	equivalent to 5 weeks' rent

The nearest tube station is South Quay, located minutes from the property, both the Jubilee and Elizabeth line are just a short distance away, offering excellent connectivity throughout the capital and beyond. Discovery Dock East's positioning gives you access to the very best that the vibrant district of Canary Wharf has to offer.



Floorplan

633 sq ft | 49.50 sq m



Pan Peninsula

Pan Peninsula, 1 Millharbour, London, E14 9XP

Lettings

020 7536 7900 | panp.lettings@chaseevans.co.uk

We're here to help.

IMPORTANT NOTICE - These particulars have been prepared in good faith and they are not intended to constitute part of an offer or contract. We have not performed a structural survey on this property and the services, appliances and specific fittings have not been tested. All photographs, measurements, floor plans and distances referred to are given as a guide and should not be relied upon.

chaseevans.com

 Chase Evans