










West Tower, Pan Peninsula Square, Canary Wharf, E14

Price **£430 per week** | Furnished

 Chase Evans



West Tower, Pan Peninsula Square, Canary Wharf, E14

-  Studio
-  1 Bathroom
-  1 Reception
-  Balcony
-  Gymnasium
-  Local Amenities
-  24-Hour Concierge
-  0.1 MI South Quay

A modern, west facing studio apartment in Pan Peninsula's West Tower, Canary Wharf E14. The main living space includes a fully integrated kitchen/ lounge opening onto a private balcony with City views, a semi separate sleeping area, floor to ceiling glazing and a luxury marble tiled shower room.

Residents of Pan Peninsula have access to 24-hour concierge services and extensive facilities including a gym, pool, cinema and a business suite.

The development is a short walk away from Canary

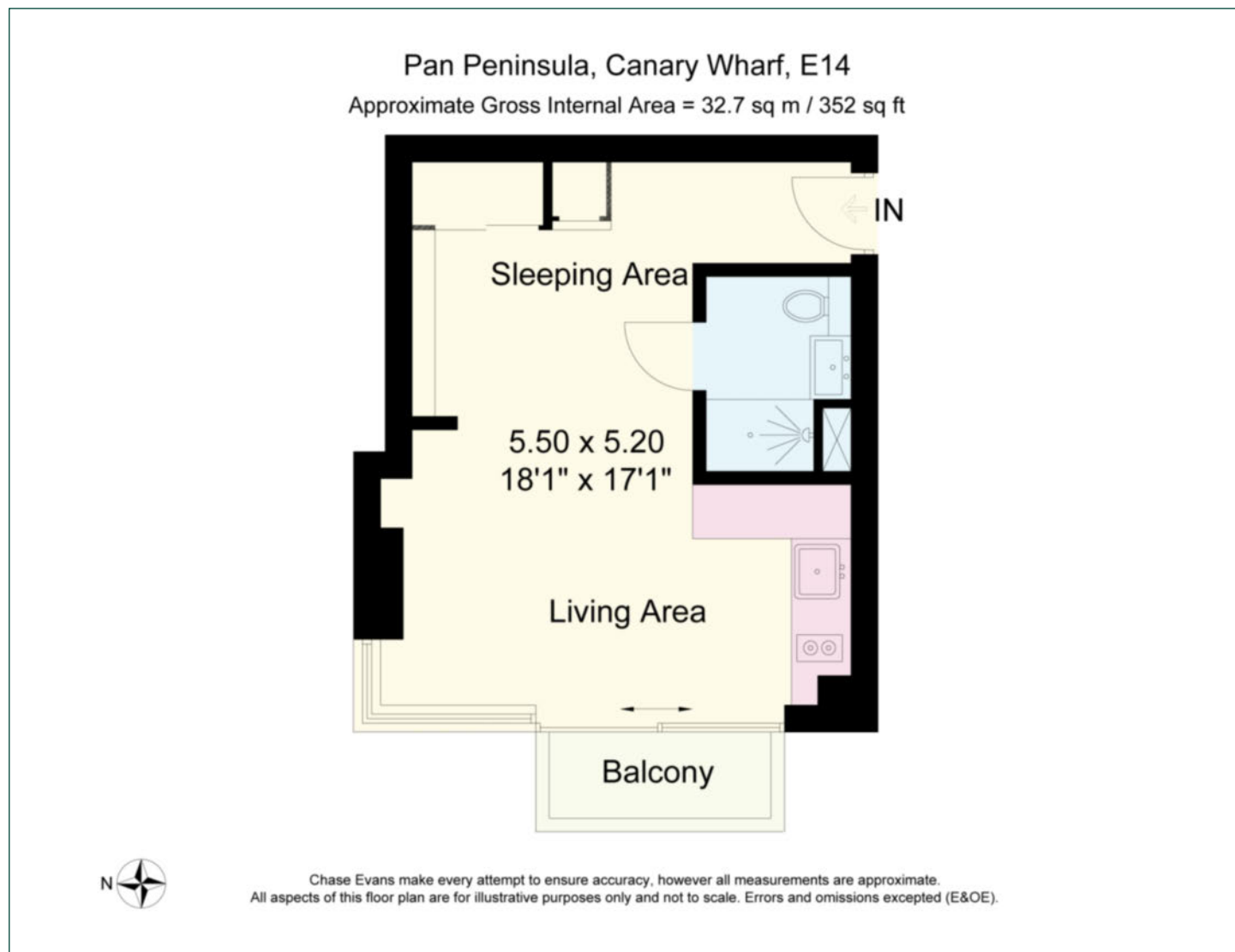
Wharf Underground and Crossrail stations, and a stone's throw from South Quay DLR station.



Local Authority:	Tower Hamlets
Council Tax Band:	F
EPC:	B
Security deposit:	equivalent to 5 weeks' rent

Floorplan

352 sq ft | 32.7 sq m



Pan Peninsula

Pan Peninsula, 1 Millharbour, London, E14 9XP

Lettings

020 7536 7900 | panp.lettings@chaseevans.co.uk

We're here to help.

IMPORTANT NOTICE - These particulars have been prepared in good faith and they are not intended to constitute part of an offer or contract. We have not performed a structural survey on this property and the services, appliances and specific fittings have not been tested. All photographs, measurements, floor plans and distances referred to are given as a guide and should not be relied upon.

chaseevans.com

 Chase Evans