









Horizons Tower, Yabsley Street, Canary Wharf, E14

Price **£625 per week** | Furnished



Horizons Tower, Yabsley Street, Canary Wharf, E14

-  2 Bedrooms
-  2 Bathrooms
-  1 Reception
-  Balcony
-  Concierge
-  Leisure Facilities
-  Walking Distance from Canary Wharf Amenities
-  0.3 MI Blackwall

Bright two bedroom, two bathroom apartment in this fantastic development in E14. This twenty-first floor property boasts a spacious open-plan living room with fully integrated stylish kitchen, sizeable bedrooms with fitted wardrobes, a master en suite and family bathroom, and generous private balcony.

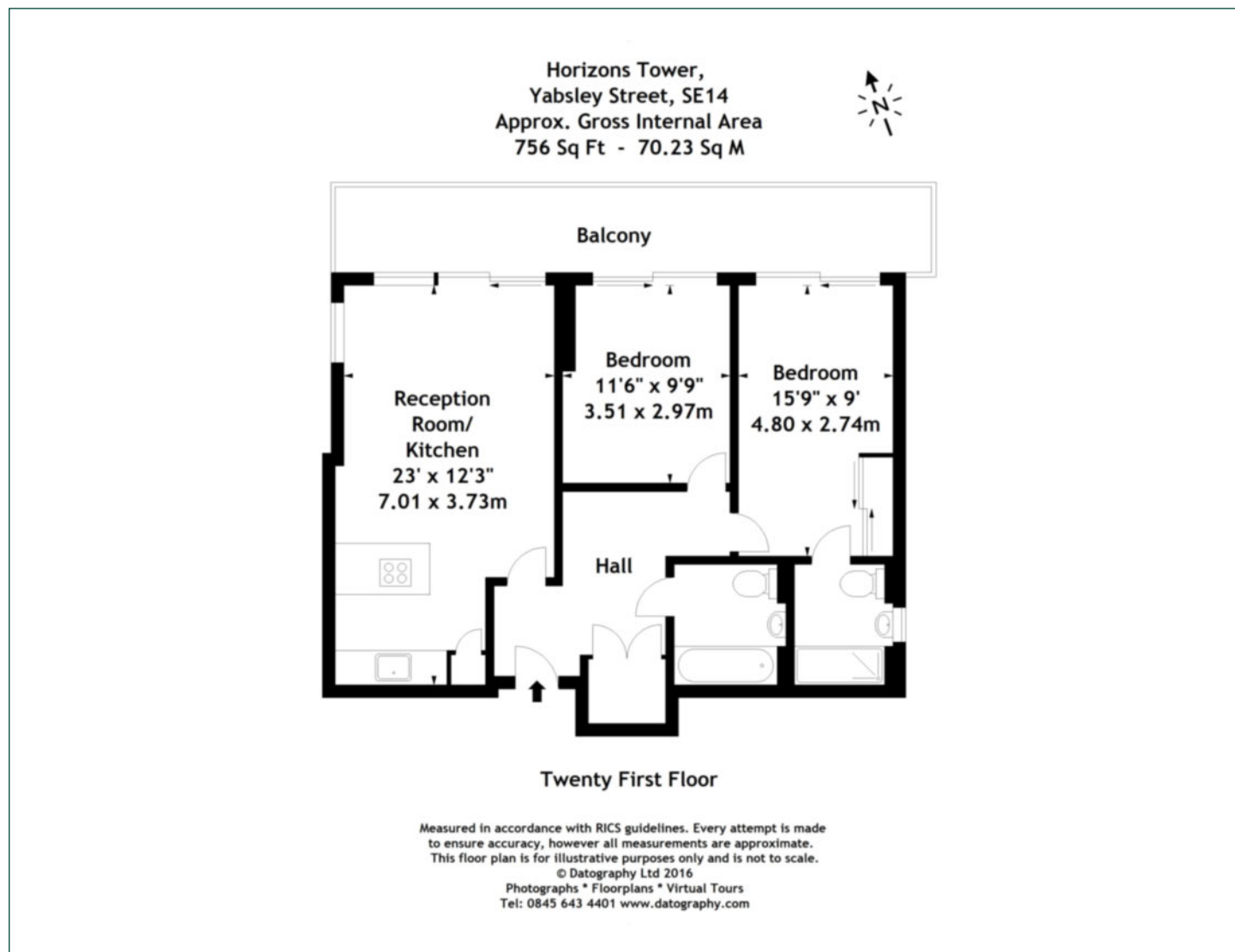
Residents will also have access to an on-site concierge service and leisure facilities.

The local amenities of Canary Wharf - bars, restaurants and cafes and the Canary Wharf Shopping Centre are all within walking distance. The development is located 0.3 miles from Blackwall DLR station, providing a valuable DLR transport link for London City Airport and other key destinations within the Capital. Further, this property is 0.6 miles away from Canary Wharf Underground Station and its Jubilee Line and the Crossrail (Elizabeth Line) Services.

Local Authority:	Tower Hamlets
Council Tax Band:	F
EPC:	B
Security deposit:	equivalent to 5 weeks' rent

Floorplan

756 sq ft | 70.23 sq m



Pan Peninsula

Pan Peninsula, 1 Millharbour, London, E14 9XP

Lettings

020 7536 7900 | panp.lettings@chaseevans.com

We're here to help.

IMPORTANT NOTICE - These particulars have been prepared in good faith and they are not intended to constitute part of an offer or contract. We have not performed a structural survey on this property and the services, appliances and specific fittings have not been tested. All photographs, measurements, floor plans and distances referred to are given as a guide and should not be relied upon.

chaseevans.com

 Chase Evans