



The Tower, One The Elephant, St Gabriel Walk, Elephant & Castle, SE1

Asking price **£560,000** | Leasehold



The Tower, One The Elephant, St Gabriel Walk, Elephant & Castle, SE1



1 Bedroom



1 Bathroom



1 Reception



Balcony



Gymnasium



Local Amenities



24-Hour Concierge



0.1 MI Elephant & Castle

Luxury one bedroom apartment in the ever-popular One The Elephant. Accommodation includes an open plan fully integrated modern kitchen/living and dining area, an ample double bedroom and a full bathroom. The property benefits from a hallway fitted with additional storage space. Features include wood flooring, underfloor heating, fitted bedroom storage and modern bathroom ware.

Residents will also have access to a 24-hour concierge service, communal reading garden, café, crèche, residents' projector room and a rooftop

space for inner city gardening or relaxing.

There are a plethora of amenities located nearby One The Elephant including a range of bars & restaurants around Elephant Park and a brand new Shopping Centre immediately opposite which is currently under construction. The development is located a short stroll from Elephant and Castle station, serving Underground and rail links for journeys across the Capital



Tenure: Leasehold (243 years remaining)

Local Authority: Southwark Council

Ground Rent: £400 p.a.

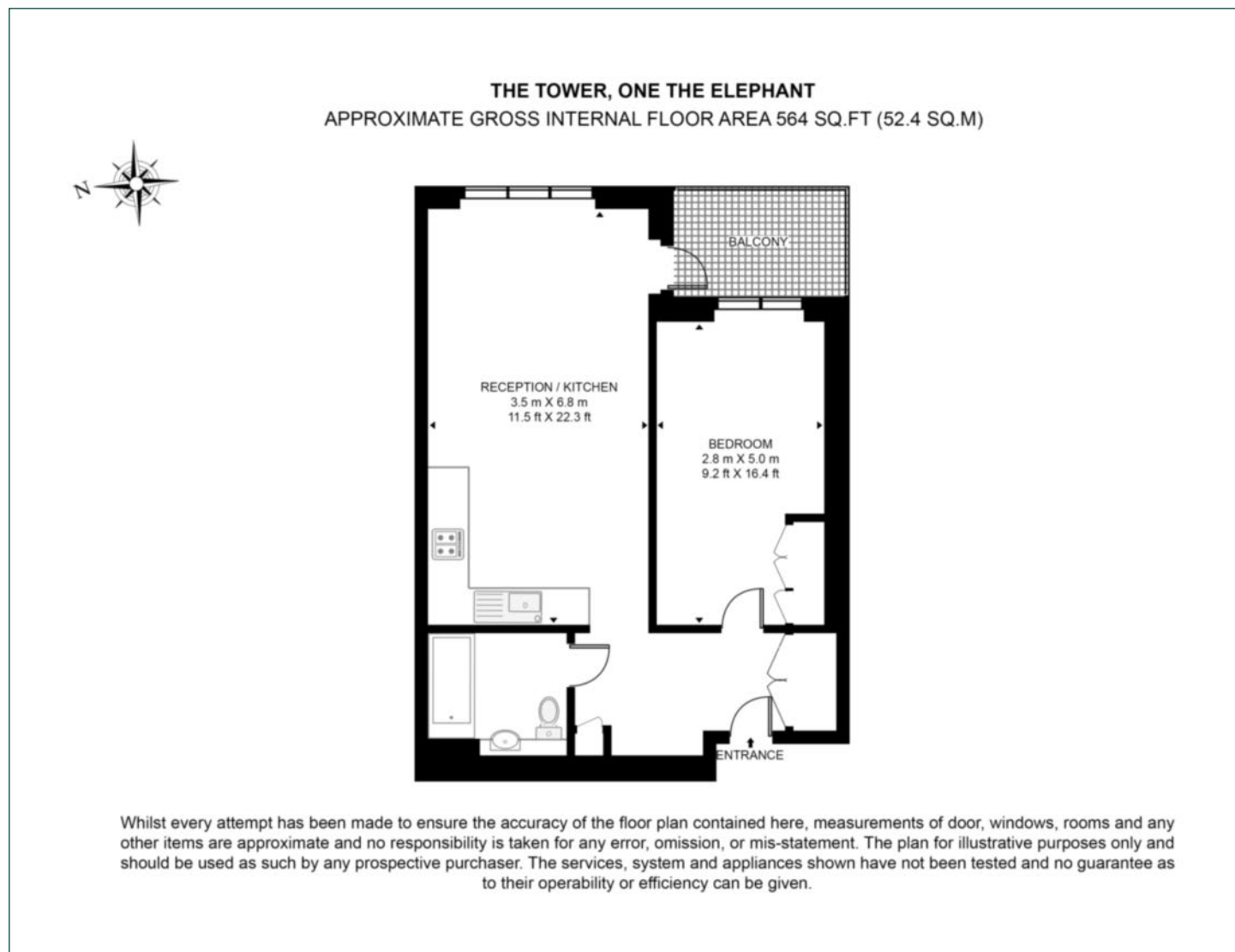
Council Tax Band: D

Service Charge: £3,779 p.a.

EPC: B

Floorplan

554 sq ft | 52.4 sq m



Elephant & Castle

One The Elephant, 5 St Gabriel Walk, London, SE1 6FA

Sales

020 3869 2888 | eandc.sales@chaseevans.co.uk

We're here to help.

IMPORTANT NOTICE - These particulars have been prepared in good faith and they are not intended to constitute part of an offer or contract. We have not performed a structural survey on this property and the services, appliances and specific fittings have not been tested. All photographs, measurements, floor plans and distances referred to are given as a guide and should not be relied upon.

chaseevans.com

 Chase Evans