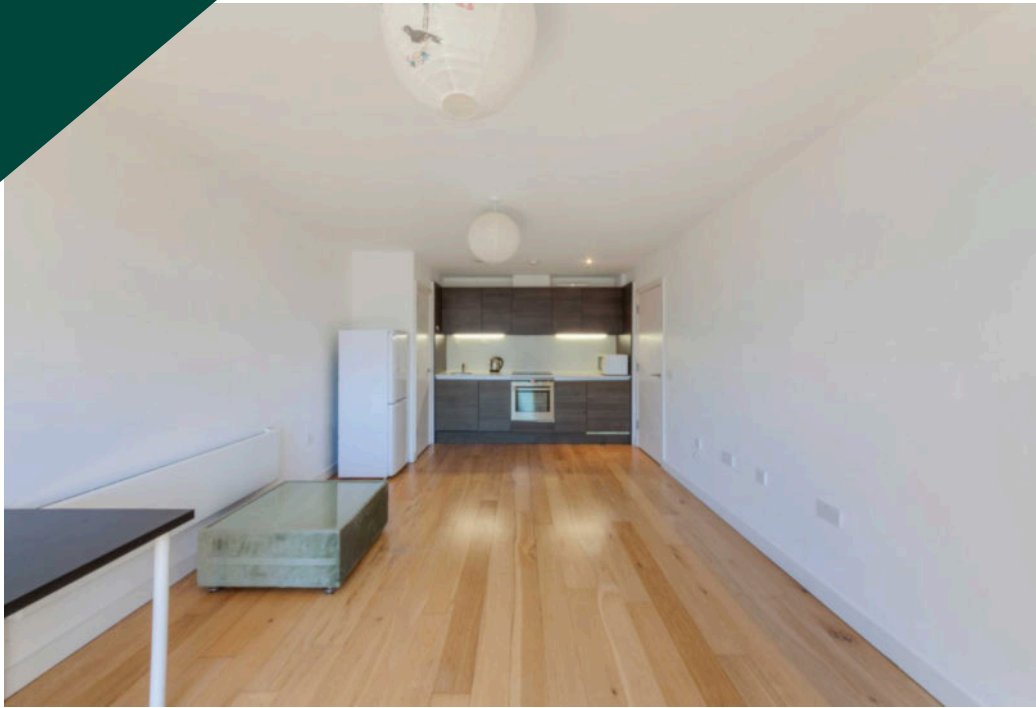


O Central, Crampton Street, Elephant & Castle, SE17

Price **£435 per week** | Furnished



O Central, Crampton Street, Elephant & Castle, SE17



1 Bedroom



1 Bathroom



1 Reception



Balcony



Local Amenities



Concierge Service

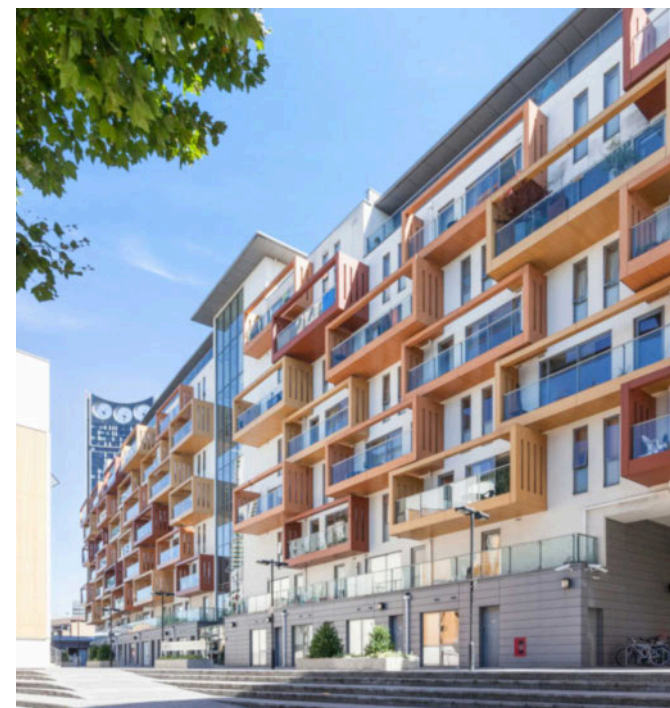


0.5 MI Elephant & Castle

A spacious one bedroom apartment set within the O Central development located near to Elephant and Castle's transport links and amenities. Featuring high ceilings, private balcony, this apartment includes an open plan living area, fitted kitchen with integrated appliances, wood flooring, large bedroom with built-in wardrobes and a stylish bathroom suite.

Residents have lift access and concierge service. There are several amenities located nearby including restaurants, cafés and the Elephant and Castle Shopping Centre.

The development is located half a mile (or around a 10min walk) from Elephant & Castle National Rail and Underground stations, providing Underground and Rail services for commutes towards the City and West End. The property is serviced by Thameslink, Southeastern, Bakerloo and Northern Line, opening up a plethora of transport links. Via Northern Line services Liverpool Street is just a 12min commute away.



Local Authority: Southwark Council

Council Tax Band: C

EPC: B

Security deposit: equivalent to 5 weeks' rent

Floorplan

534 sq ft | 49 sq m

CRAMPTON STREET
APPROXIMATE GROSS INTERNAL FLOOR AREA: 534 SQ FT - 49.62 SQ M



THIS FLOOR PLAN SHOULD BE USED AS A GENERAL OUTLINE FOR GUIDANCE ONLY AND DOES NOT CONSTITUTE IN WHOLE OR IN PART AN OFFER OR CONTRACT.
ANY INTENDING PURCHASER OR LESSEE SHOULD SATISFY THEMSELVES BY INSPECTION, SEARCHES, ENQUIRIES AND FULL SURVEY AS TO THE CORRECTNESS OF EACH STATEMENT.
ANY AREAS, MEASUREMENTS OR DISTANCES QUOTED ARE APPROXIMATE AND SHOULD NOT BE USED TO VALUE A PROPERTY OR BE THE BASIS OF ANY SALE OR LET.

Elephant & Castle

One The Elephant, 5 St Gabriel Walk, London, SE1 6FG

Lettings

020 3869 2888 | eandc.lettings@chaseevans.com

We're here to help.

IMPORTANT NOTICE - These particulars have been prepared in good faith and they are not intended to constitute part of an offer or contract. We have not performed a structural survey on this property and the services, appliances and specific fittings have not been tested. All photographs, measurements, floor plans and distances referred to are given as a guide and should not be relied upon.

chaseevans.com

 Chase Evans