





Tower Mint Apartments, John Fisher Street, Tower Hill, E1

Asking price **£375,000** | Leasehold



Tower Mint Apartments, John Fisher Street, Tower Hill, E1

-  1 Bedroom
-  1 Bathroom
-  1 Reception
-  Patio
-  Secure Cycle Storage
-  Local Amenities
-  0.2 MI Tower Gateway

Bright and modern one bedroom, one bathroom property set within the stylish modern development of Royal Mint Street/ John Fisher Street. Features an open-plan reception room with fully equipped sleek kitchen with integrated appliances, floor-to-ceiling glazing which lead to a private patio, wood flooring, good sized bedroom with built-in storage and tiled bathroom. Ample storage throughout.

Local area provides an eclectic range of London attractions from independent boutiques of Shoreditch to famous high street names found in Liverpool Street while the fantastic Butler's Wharf offers a varied selection of cafes and restaurants. The River Thames is also good for discovering

new places to dine, walk or just past the time while proximity to South Bank, Waterloo and Southwark provide plenty of opportunities for the cultural activity enthusiasts.

Local transport links include Tower Hill Underground Station (District, Circle Line), Liverpool Street Station (Central, Circle, Metropolitan and Hammersmith & City lines, National Rail) and well served bus routes running to the City and the West End. For the motorist, this development is close to the A100 and A13 roads, both within easy access to the East and South London.

*Service charge amount - £2,447.98 p.a. inc. building insurance.

Tenure:	Leasehold (111 years remaining)	Local Authority:	Tower Hamlets
Ground Rent:	N/A	Council Tax Band:	D
Service Charge:	£2,447.98 p.a	EPC:	C

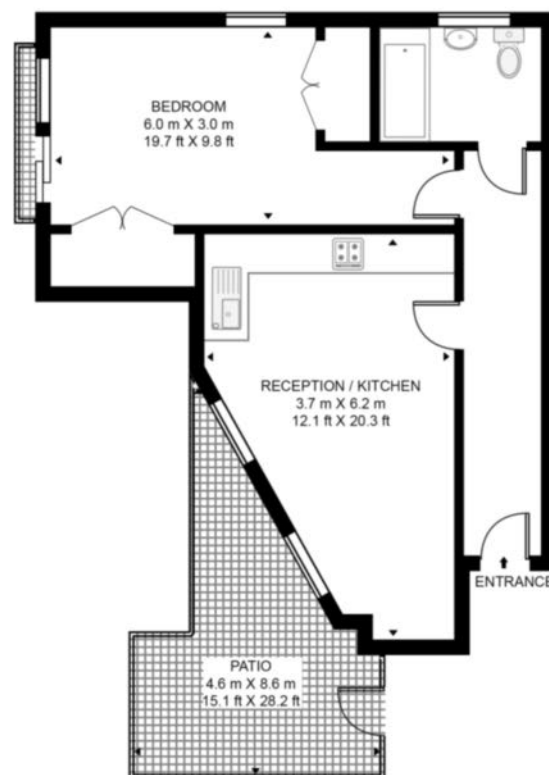


Floorplan

533 sq ft | 49.5 sq m



TOWER MINT APARTMENTS, E1 APPROXIMATE GROSS INTERNAL FLOOR AREA 533 SQ.FT (49.5 SQ.M)



Whilst every attempt has been made to ensure the accuracy of the floor plan contained here, measurements of door, windows, rooms and any other items are approximate and no responsibility is taken for any error, omission, or mis-statement. The plan for illustrative purposes only and should be used as such by any prospective purchaser. The services, system and appliances shown have not been tested and no guarantee as to their operability or efficiency can be given.

City & Aldgate

122 Whitechapel High Street, London, E1 7PT

Sales

020 7488 2777 | city.sales@chaseevans.com

We're here to help.

IMPORTANT NOTICE - These particulars have been prepared in good faith and they are not intended to constitute part of an offer or contract. We have not performed a structural survey on this property and the services, appliances and specific fittings have not been tested. All photographs, measurements, floor plans and distances referred to are given as a guide and should not be relied upon.

chaseevans.com

 Chase Evans