


## Park Drive, Canary Wharf, E14

Price **£625 per week** | Furnished



# Park Drive, Canary Wharf, E14

-  Studio
-  1 Bathroom
-  1 Reception
-  Prime Location
-  Cinema Room
-  Local Amenities
-  24-Hour Concierge
-  02 MI Canary Wharf

Spacious studio suite apartment set within 10 Park Drive, Wood Wharf, the luxury waterside development in the heart of Canary Wharf. This 675 sq ft furnished property comprises an open-plan living area, stylish kitchen with integrated appliances, underfloor heating, wooden flooring, good-sized sleeping area with fitted storage space and pristine bathroom suite.

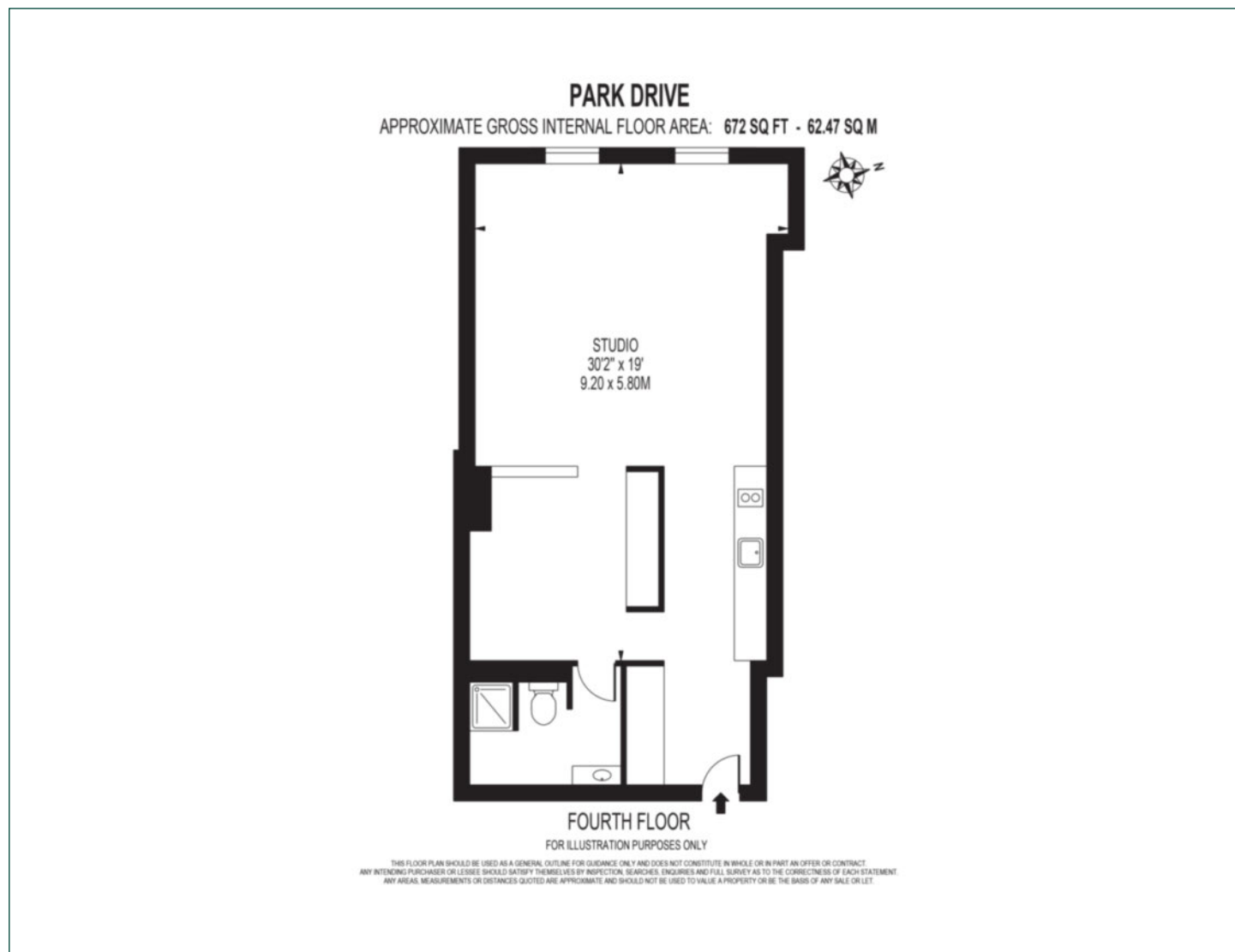
With 24-hour concierge, access to a cinema. A stroll to Canary Wharf Underground station and all the shopping and leisure facilities of Canary Wharf centre. The apartment is a short walk away from the future Crossrail station with Elizabeth Line trains to the City, Paddington and Heathrow.



Local Authority:	Tower Hamlets
Council Tax Band:	E
EPC:	B
Security deposit:	equivalent to 5 weeks' rent

# Floorplan

672 sq ft | 62.47 sq m



## Pan Peninsula

Pan Peninsula, 1 Millharbour, London, E14 9XP

## Lettings

020 7536 7900 | [panp.lettings@chaseevans.com](mailto:panp.lettings@chaseevans.com)

## We're here to help.

IMPORTANT NOTICE - These particulars have been prepared in good faith and they are not intended to constitute part of an offer or contract. We have not performed a structural survey on this property and the services, appliances and specific fittings have not been tested. All photographs, measurements, floor plans and distances referred to are given as a guide and should not be relied upon.

[chaseevans.com](https://chaseevans.com)

 Chase Evans