



Indescon Square, Canary Wharf, E14

Price **£400 per week** | Furnished



Indescon Square, Canary Wharf, E14



Studio



1 Bathroom



1 Reception



Communal Gardens



Local Amenities



Prime Location



24-Hour Concierge



0.6 MI Canary Wharf

Bright studio apartment situated in this stunning, landscaped development. This property benefits from a separate sleeping area, fully integrated and fitted kitchen, natural filled light, wood flooring, large glazing, tiled bathroom suite with smart fittings and fixtures, wood flooring, built in storage.

Residents benefit from landscaped grounds and a 24-hour concierge service. The property offers an excellent location for access to Canary Wharf. Located just 3mins from South Quay DLR stop and just 5mins from Canary Wharf Underground makes the property perfectly suited to commutes along

Jubilee and DLR lines.

Currently, commutes from Canary Wharf to Bank, for example, are just 12mins. This apartment is an excellent hub for the Elizabeth Line, a service that see's journeys as far as Heathrow Airport achieved in as little as 39mins and travel to Tottenham Court Road reduced from 23mins to 11mins.

Local Authority:

Tower Hamlets

Council Tax Band:

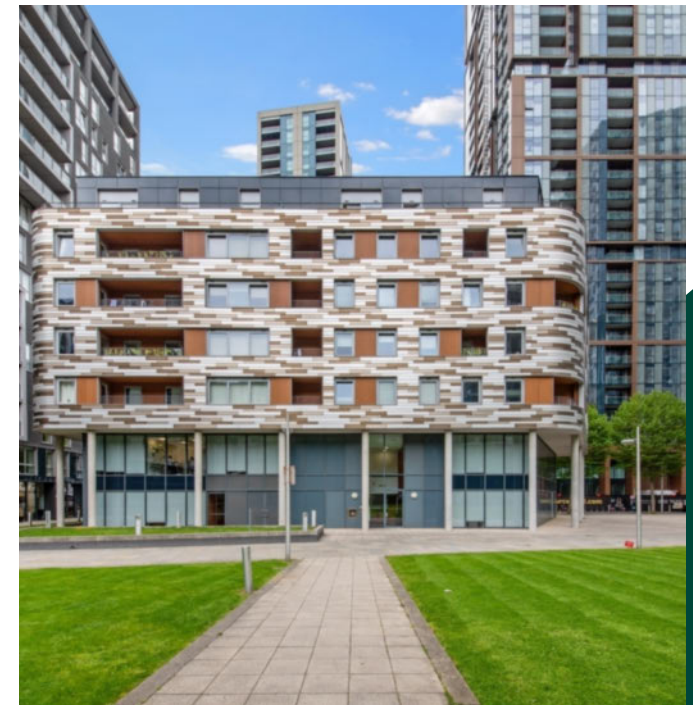
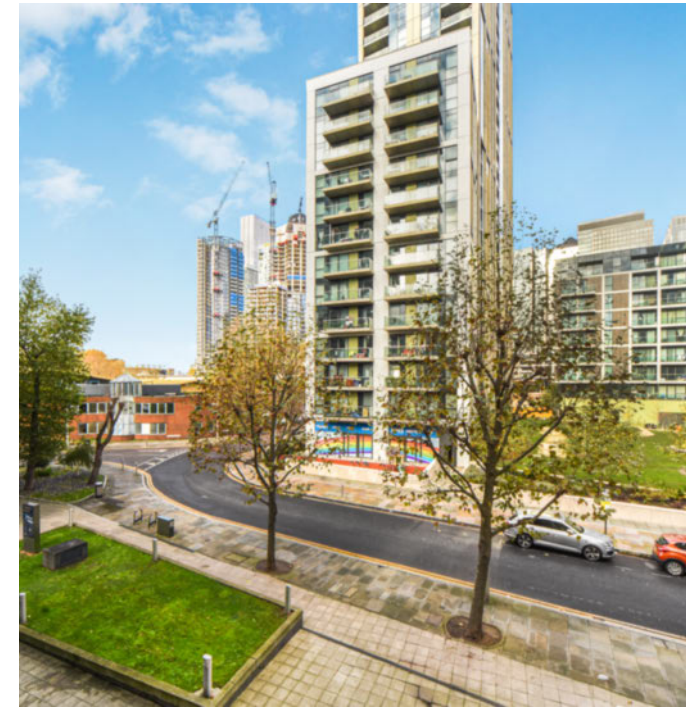
D

EPC:

C

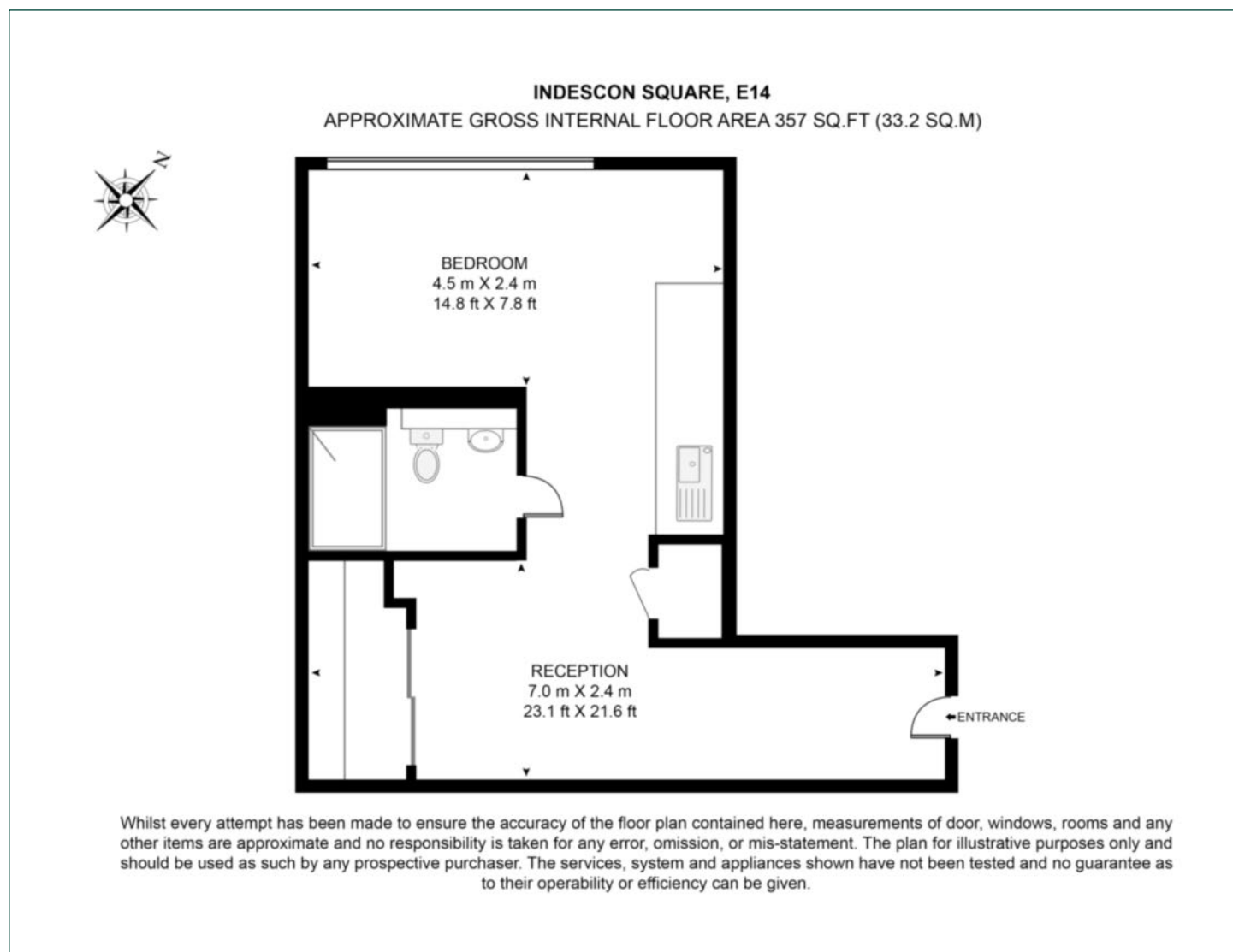
Security deposit:

equivalent to 5 weeks' rent



Floorplan

357 sq ft | 33.2 sq m



Pan Peninsula

Pan Peninsula, 1 Millharbour, London, E14 9XP

Lettings

020 7536 7900 | panp.lettings@chaseevans.co.uk

We're here to help.

IMPORTANT NOTICE - These particulars have been prepared in good faith and they are not intended to constitute part of an offer or contract. We have not performed a structural survey on this property and the services, appliances and specific fittings have not been tested. All photographs, measurements, floor plans and distances referred to are given as a guide and should not be relied upon.

chaseevans.com

 Chase Evans