











Schrier Ropeworks, Barking Central, Arboretum Place, Barking, IG11

Asking price **£195,000** | Leasehold



Schrier Ropeworks, Barking Central, Arboretum Place, Barking, IG11

-  1 Bedroom
-  1 Bathroom
-  1 Reception
-  Balcony
-  Lift Access
-  Local Amenities
-  24-Hour Concierge
-  0.2 MI Barking

This well proportioned and light one bedroom apartment within a contemporary development in the heart of Barking. This property comprises an open plan fully fitted kitchen, a bright living/ dining area with access to a private balcony, wood flooring, floor to ceiling glazing, high ceilings, an ample-sized bedroom with built in storage and a fully tiled bathroom.

The development offers concierge services and is located within walking distance of Barking Station with the London Underground and National Rail services. Abbey Leisure Centre with two swimming

pools, 140-station gym and a group fitness studio is a stone's throw away from the development.

The Broadway Theatre is nearby as are the most of typical high street supermarket brands. Abbey Green is the nearest large parkland, a short stroll from Barking Central. This attractive public green space is a home to the remains of Barking Abbey, the former royal monastery dating back to 7th century.



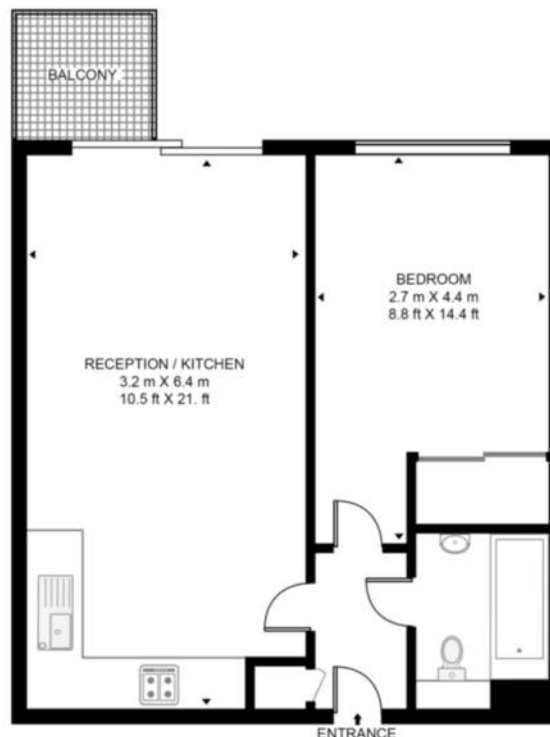
Tenure:	Leasehold (134 years remaining)	Local Authority:	Barking & Dagenham
Ground Rent:	£200 p.a.	Council Tax Band:	D
Service Charge:	£3,285 p.a.	EPC:	B

Floorplan

413 sq ft | 38.4 sq m



SCHRIER ROPEWORKS, 1 ARBORETUM PLACE, IG11
APPROXIMATE GROSS INTERNAL FLOOR AREA 413 SQ.FT (38.4 SQ.M)



Whilst every attempt has been made to ensure the accuracy of the floor plan contained here, measurements of door, windows, rooms and any other items are approximate and no responsibility is taken for any error, omission, or mis-statement. The plan for illustrative purposes only and should be used as such by any prospective purchaser. The services, system and appliances shown have not been tested and no guarantee as to their operability or efficiency can be given.

Canary Wharf

Horizon Building, 15 Hertsmere Road, London, E14 4AW

Sales

020 7515 1000 | canarywharf.sales@chaseevans.co.uk

We're here to help.

IMPORTANT NOTICE - These particulars have been prepared in good faith and they are not intended to constitute part of an offer or contract. We have not performed a structural survey on this property and the services, appliances and specific fittings have not been tested. All photographs, measurements, floor plans and distances referred to are given as a guide and should not be relied upon.

chaseevans.com