



Hurlock Heights, Elephant Park, 4 Deacon Street, Elephant & Castle, SE17

Asking price **£425,000** | Leasehold



Hurlock Heights, Elephant Park, 4 Deacon Street, Elephant & Castle, SE17

-  Studio
-  1 Bathroom
-  1 Reception
-  Balcony
-  Gymnasium
-  Secure Cycle Storage
-  Local Amenities
-  24-Hour Concierge
-  0.2 MI Elephant & Castle

Luxury studio apartment set within Hurlock Heights - a building forming part of the impressive 'Elephant Park' development. Accommodation comprises a spacious living room, fully-fitted stylish kitchen with integrated appliances, floor to ceiling glazing leading to a spacious balcony, recessed lighting, contemporary bathroom, wood flooring.

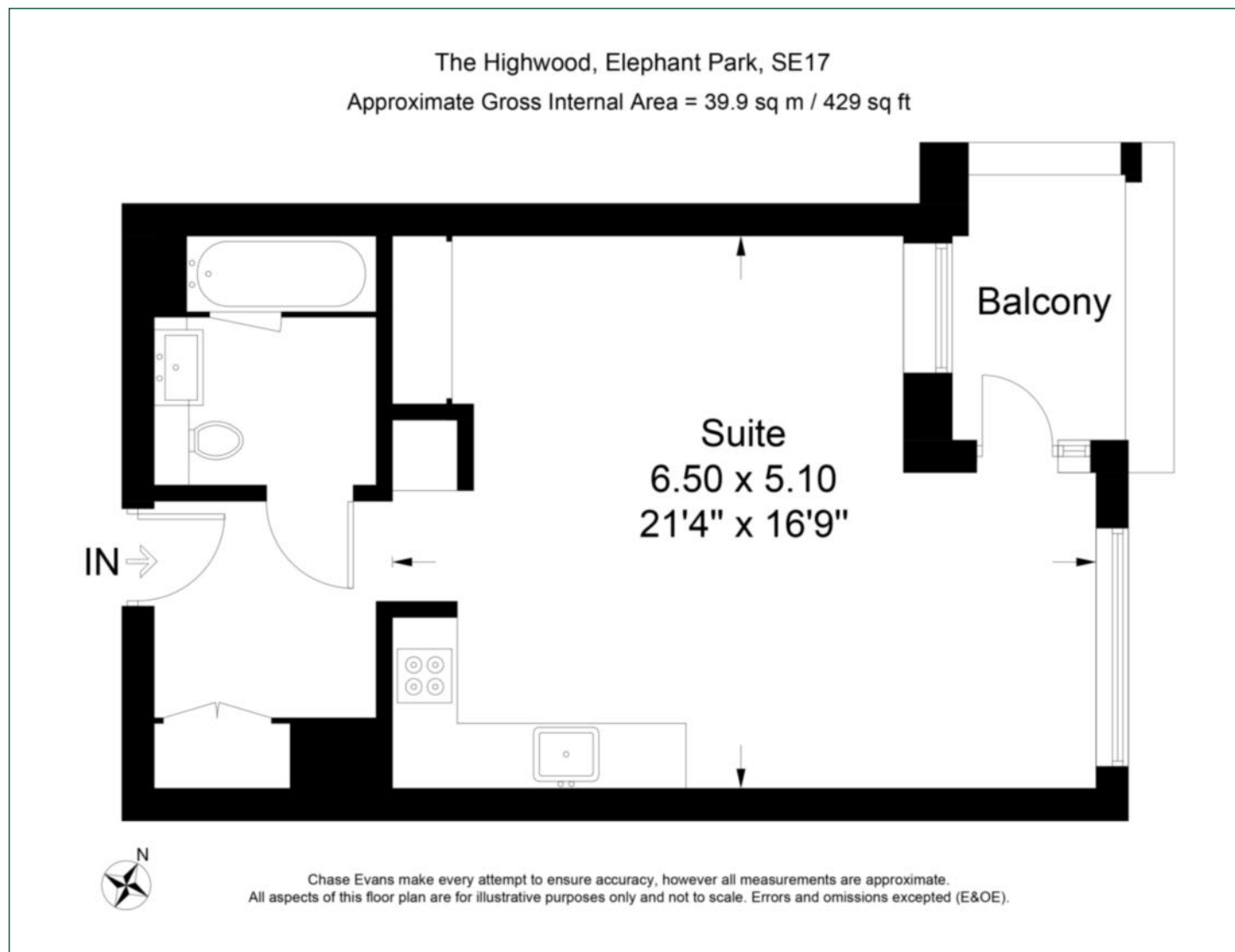
Residents benefit from an array of facilities which will include a gymnasium, communal gardens, secure cycle storage and a 24-hour concierge service. There are several amenities located nearby including bars, cafés, restaurants and the Elephant

and Castle Shopping Centre. The development is located close to Elephant and Castle National Rail and Underground stations, providing Underground and Rail services for commutes towards the City and West End. The property is serviced by Thameslink, Southeastern, Bakerloo and Northern Line, opening up a plethora of transport links.

Tenure:	Leasehold (250 years)	Local Authority:	Southwark Council
Ground Rent:	£300 p.a.	Council Tax Band:	D
Service Charge:	£4.30 psf p.a.	EPC:	C

Floorplan

429 sq ft | 39.9 sq m



Elephant & Castle

One The Elephant, 5 St Gabriel Walk, London, SE1 6FA

Sales

020 3869 2898 | eandc.sales@chaseevans.co.uk

We're here to help.

IMPORTANT NOTICE - These particulars have been prepared in good faith and they are not intended to constitute part of an offer or contract. We have not performed a structural survey on this property and the services, appliances and specific fittings have not been tested. All photographs, measurements, floor plans and distances referred to are given as a guide and should not be relied upon.

chaseevans.com

 Chase Evans