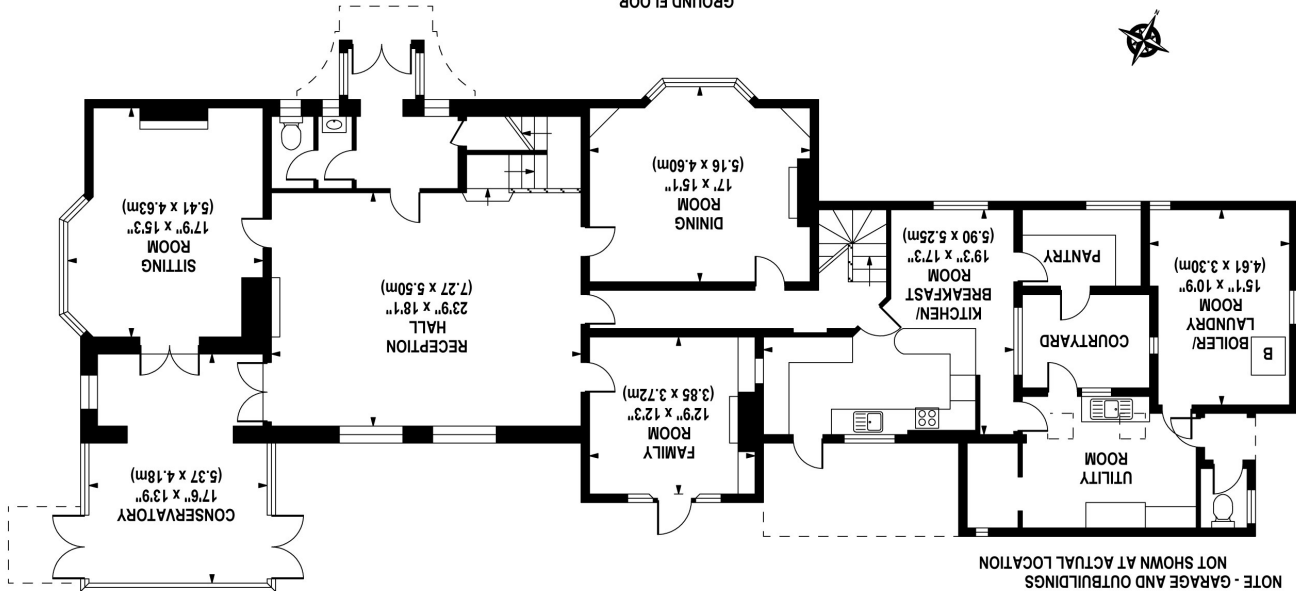
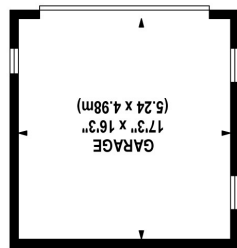
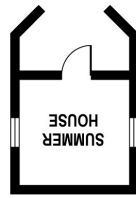


MILLSTONES HOUSE, SLINDON
APPROX. GROSS INTERNAL FLOOR AREA 3914 SQ FT / 364 SQ M (MAIN HOUSE) (EXCLUDING VOID)
APPROX. GROSS INTERNAL FLOOR AREA 350 SQ FT / 33 SQ M (OUTBUILDINGS)

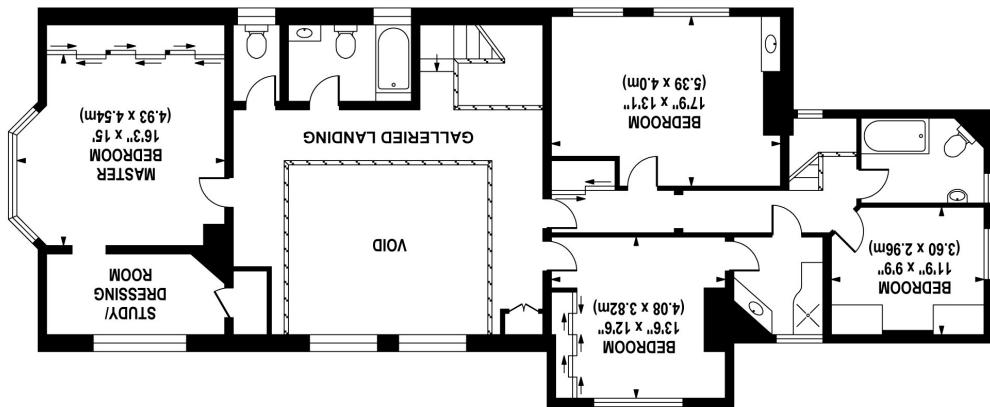
GROUND FLOOR
2412 SQ FT / 224 SQ M



NOTE - GARAGE AND OUTBUILDINGS
NOT SHOWN AT ACTUAL LOCATION



FIRST FLOOR
1502 SQ FT / 140 SQ M
(EXCLUDING VOID)



STRIDE & SON

Southdown House, St. John's Street, Chichester, PO19 1XQ

Tel: 01243 782626 Fax: 01243 786713

www.strideandson.co.uk

properties@strideandson.co.uk



Slindon



GUIDE PRICE: £2,250,000 FREEHOLD

