



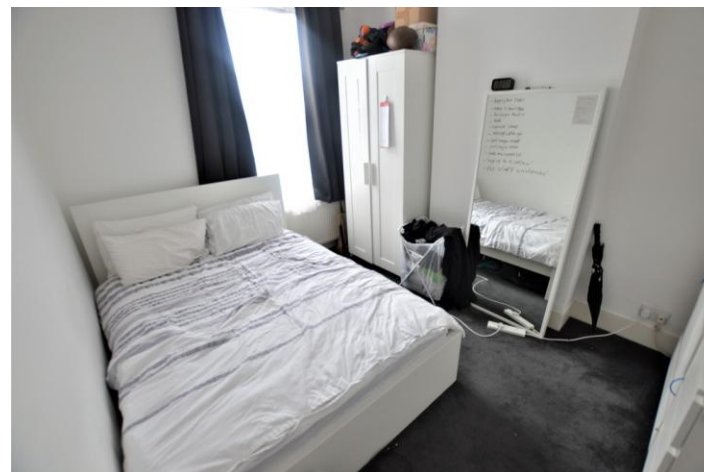
- Three bedrooms
- Two receptions
- Extended Kitchen
- Lawned garden

## Stretton Road, Croydon, CR0 6EN

\*\*\*\* SUMMER SALE \*\*\*\* Price guide £390,000 to £410,000 . . . . Spacious three bedroom extended end of terraced property situated in a prime central position within easy access of East Croydon Station. The property is well presented throughout and is offered for sale with no forward chain! Having two large reception room and an extended kitchen to the ground floor, as well as three bedrooms and an upstairs shower/wc. outside you will find an established lawned garden and side access. Call us now to arrange your viewing!

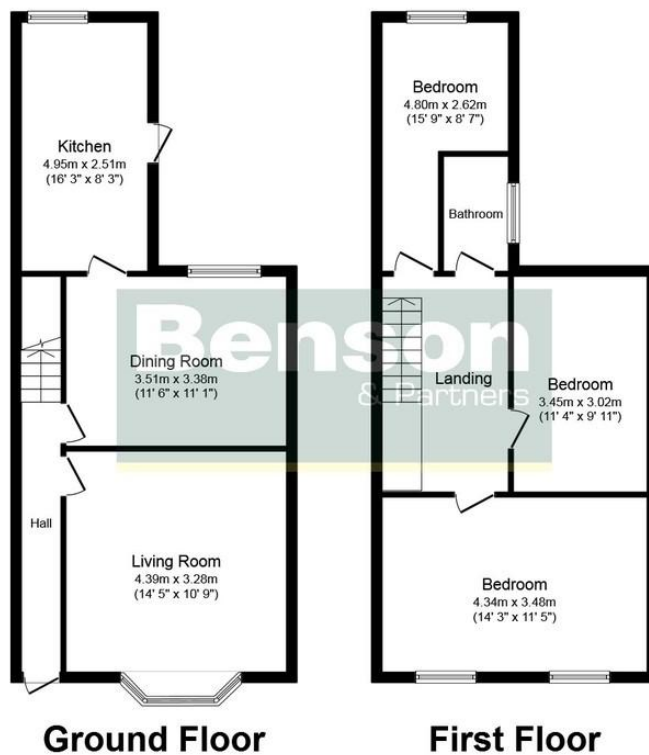
**Offers In Excess Of £390,000**

## Property Description









%epcGraph\_c\_1\_334%

This plan is for illustration purposes only and may not be representative of the property. Plan not to scale.

49 Lower Addiscombe Road,  
Croydon, Surrey, CR0 6PQ

www.bensonpartners.co.uk  
02086670121  
eastcroydon@bensonpartners.co.uk

Agents Note: Whilst every care has been taken to prepare these sales particulars, they are for guidance purposes only. All measurements are approximate and are for general guidance purposes only and whilst every care has been taken to ensure their accuracy, they should not be relied upon and potential buyers are advised to recheck the measurements.