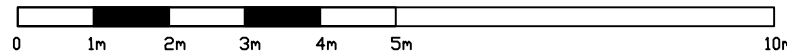
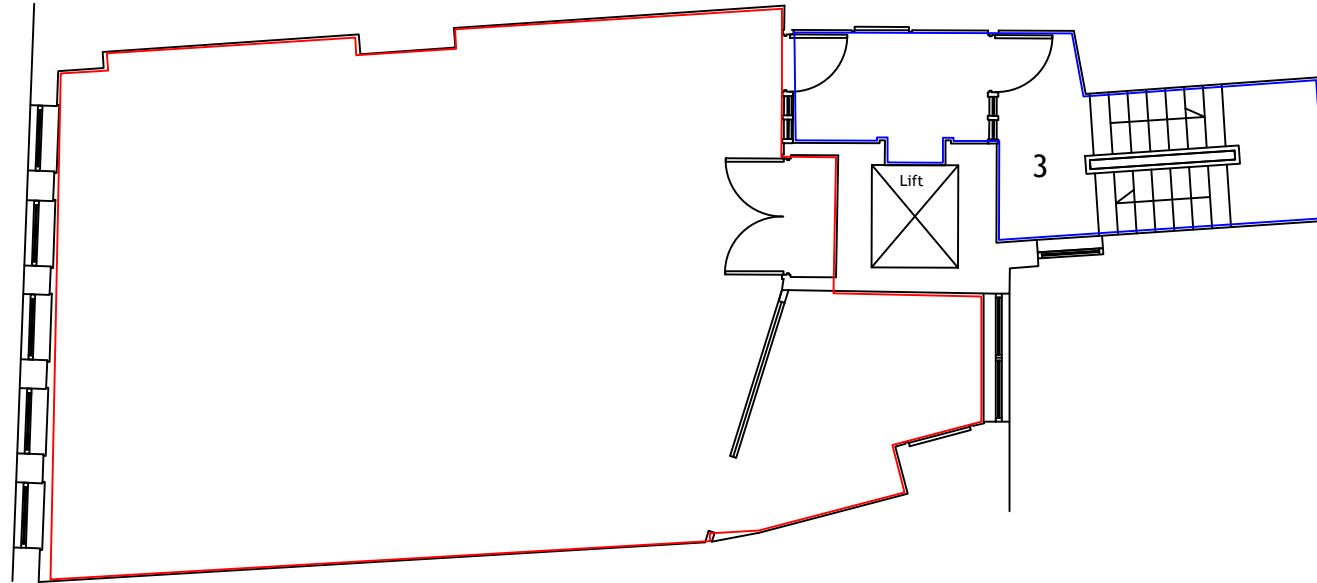


# Third Floor Plan

UNION STREET

BOROUGH HIGH STREET



<p>This drawing and information shown are the copyright of 2scale ltd</p>	<p><span style="border: 1px solid red; display: inline-block; width: 10px; height: 10px;"></span> Demise</p> <p><span style="border: 1px solid blue; display: inline-block; width: 10px; height: 10px;"></span> Shared</p>	<p><b>2Scale Ltd</b></p> <p>6 Kinfauns Road London SW2 3JL          Tel : 07903 198764          email : lisa.couse@2scale.co.uk          www.2scale.co.uk</p>	<p><b>Client</b> Fry's Properties Ltd</p>	<p><b>Scale</b> 1:100</p> <p><b>Date</b> A4 18.11.17</p>
			<p><b>Project</b> 80, Borough High Street London SE1 1LL</p>	<p><b>Drawn By</b> LJC</p> <p><b>Checked By</b></p>
			<p><b>Title</b> Third Floor Plan</p>	<p><b>Project No</b> 0542</p> <p><b>Dwg. No</b> 303</p> <p><b>Rev.</b></p>