

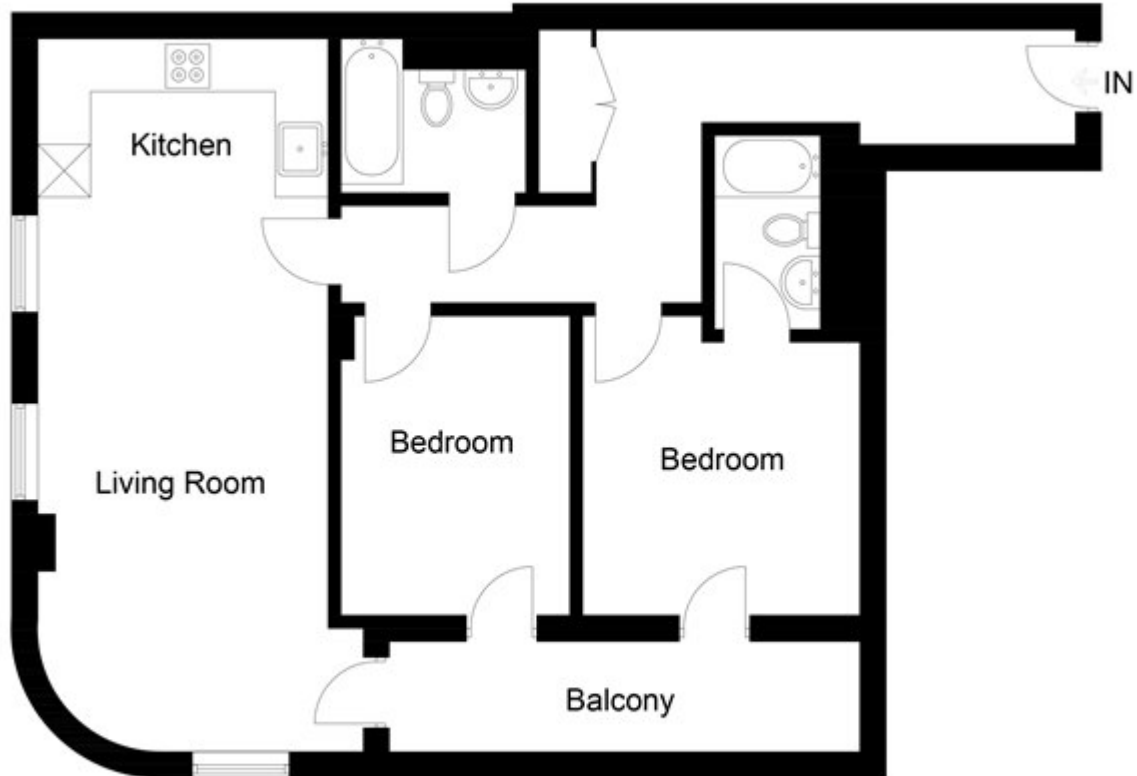
Indescon Square, London

£520,000 Leasehold

---

Indescon Square, Canary Wharf, E14

Approximate Gross Internal Area = 69.9 sq m / 754 sq ft



Chase Evans make every attempt to ensure accuracy, however all measurements are approximate.  
All aspects of this floor plan are for illustrative purposes only and not to scale. Errors and omissions excepted (E&OE).