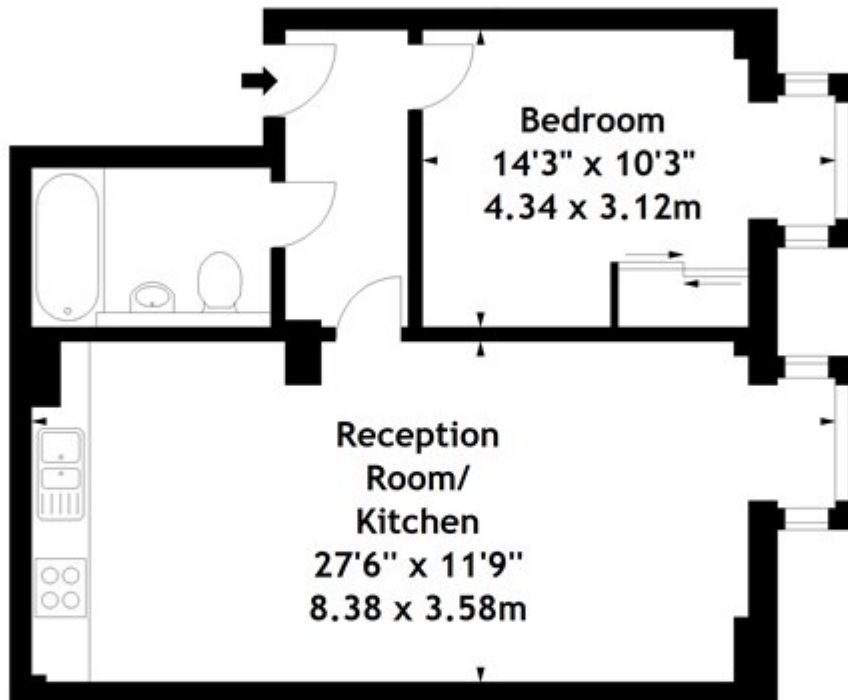


Alie Street, London

£475,000 Leasehold

Lattice House,
Allie Street, E1
Approx. Gross Internal Area
541 Sq Ft - 50.26 Sq M



Fifth Floor

Measured in accordance with RICS guidelines. Every attempt is made to ensure accuracy, however all measurements are approximate. This floor plan is for illustrative purposes only and is not to scale.

© Datography Ltd 2016

Photographs * Floorplans * Virtual Tours

Tel: 0845 643 4401 www.datography.com