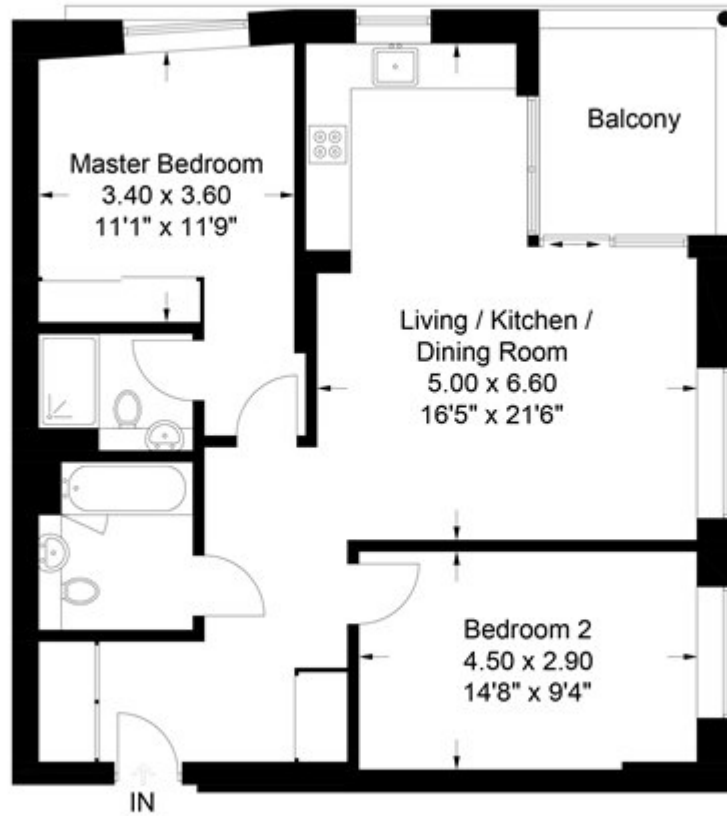


Walworth Road, London

£725 PW

Orchard Point, West Grove, SE17  
Approximate Gross Internal Area = 77 sq m / 828 sq ft



Chase Evans makes every attempt to ensure accuracy, however all measurements are approximate.  
All aspects of this floor plan are for illustrative purposes only and not to scale. Errors and omissions excepted (E&OE).