

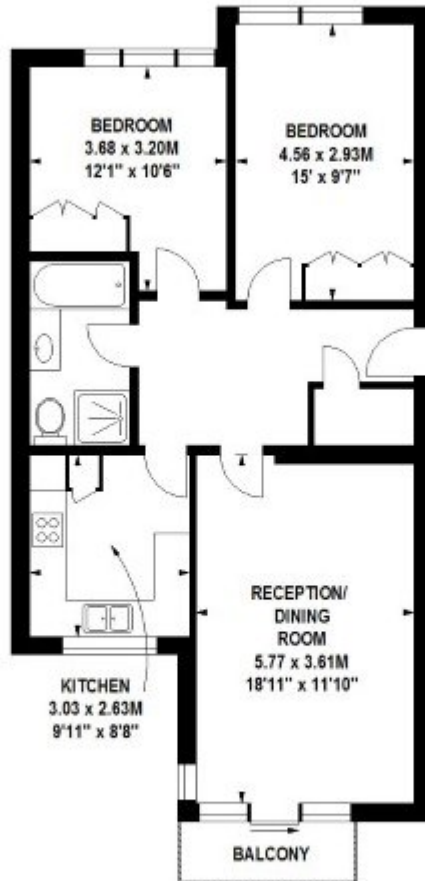
Adamson Road, London

£2,600 PCM

Adamson Road, NW3

Approximate gross internal area

72 sq m / 775 sq ft



First Floor

Floor Plan produced for Atlas Property by Mays Floorplans © . Tel 020 3397 4594
Illustration for identification purposes only, not to scale
All measurements are maximum, and include wardrobes and window bays where applicable