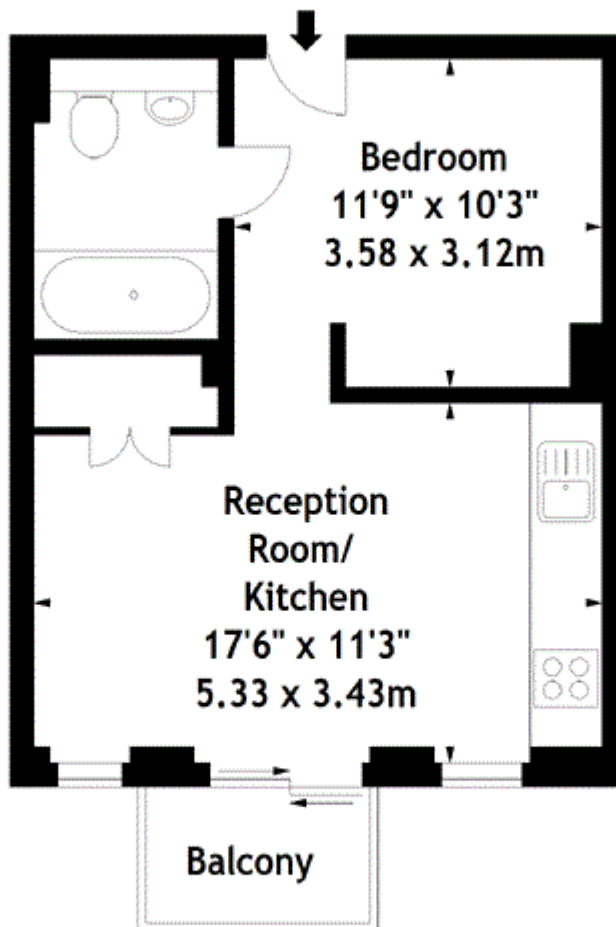


Hannaford Walk, London

£380,000 Leasehold

---

Ivy Point,  
Hannaford Walk, E3  
Approx. Gross Internal Area  
386 Sq Ft - 35.86 Sq M



### Eleventh Floor

Measured in accordance with RICS guidelines. Every attempt is made to ensure accuracy, however all measurements are approximate.

This floor plan is for illustrative purposes only and is not to scale.

© Datagraphy Ltd 2016

Photographs \* Floorplans \* Virtual Tours

Tel: 0845 643 4401 [www.datagraphy.com](http://www.datagraphy.com)