

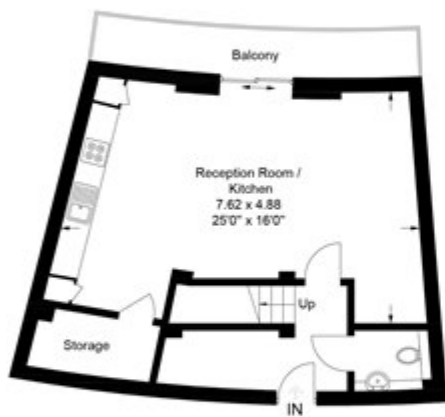
Maltby Street, London

£1,375,000 Leasehold

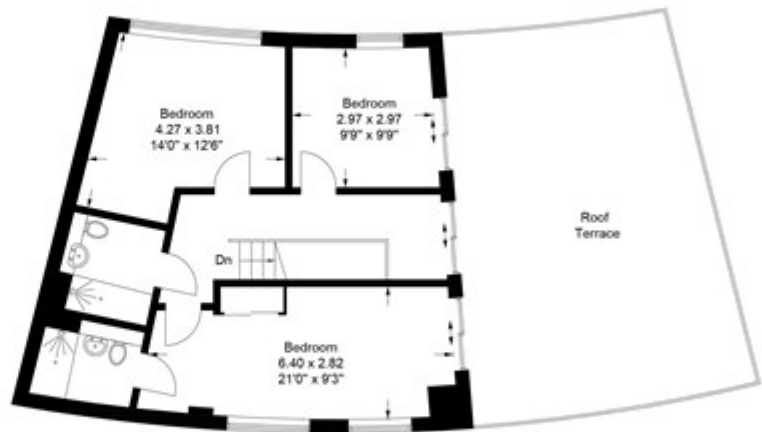
---

Maltby Street, SE1

Approximate Gross Internal Area = 116.7 sq m / 1256 sq ft



Eighth Floor



Ninth Floor



Chase Evans makes every attempt to ensure accuracy, however all measurements are approximate.  
All aspects of this floor plan are for illustrative purposes only and not to scale. Errors and omissions excepted (E&OE).