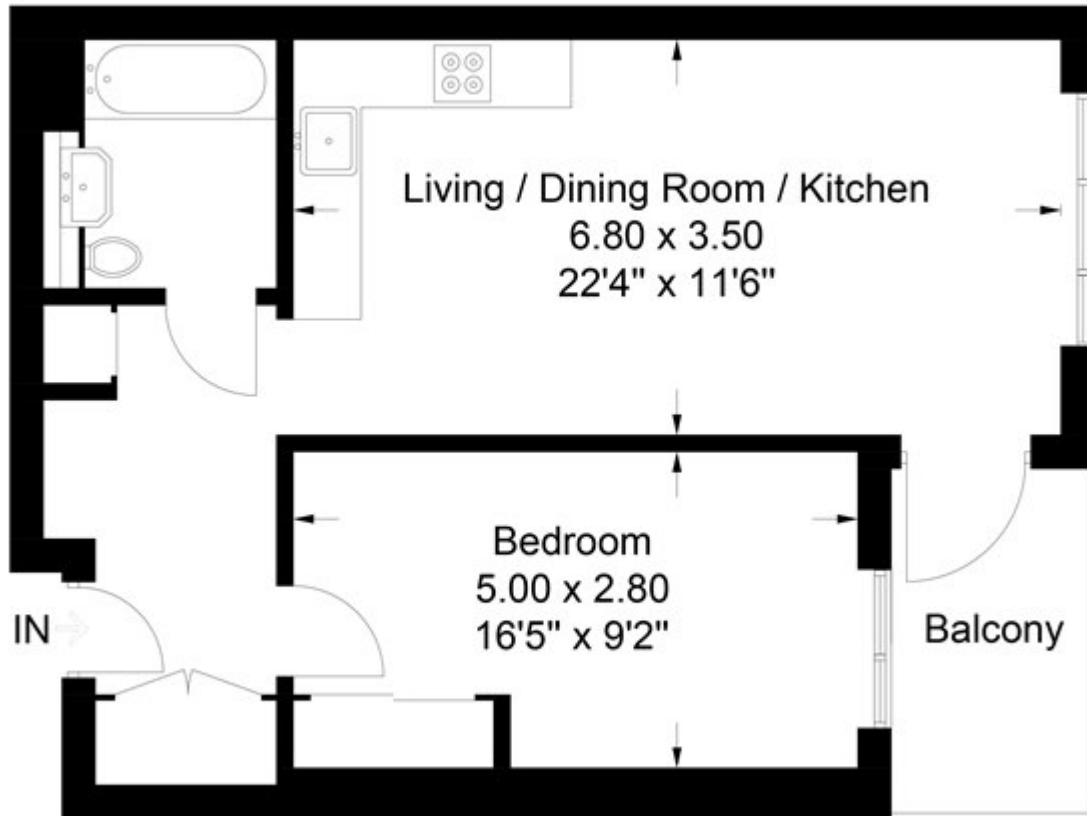


St Gabriel Walk, London

£525,000 Leasehold

The Tower, One The Elephant, 1 St. Gabriels Walk

Approximate Gross Internal Area = 51.9 sq m / 559 sq ft



Chase Evans makes every attempt to ensure accuracy, however all measurements are approximate.
All aspects of this floor plan are for illustrative purposes only and not to scale. Errors and omissions excepted (E&OE).