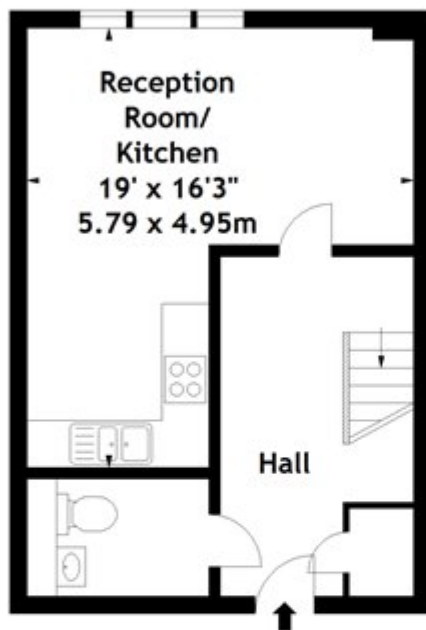


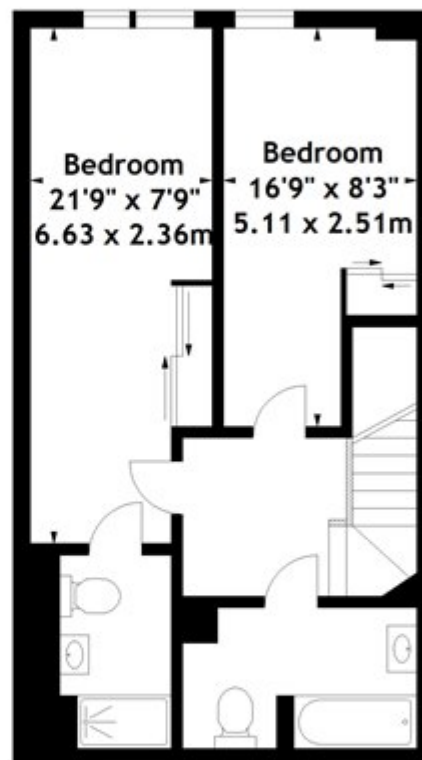
Dowells Street, London

OIEO £625,000 Leasehold

Beacon Point,
Dowells Street, SE10
Approx. Gross Internal Area
895 Sq Ft - 83.15 Sq M



Ground Floor



First Floor

Measured in accordance with RICS guidelines. Every attempt is made to ensure accuracy, however all measurements are approximate. This floor plan is for illustrative purposes only and is not to scale.
© Datography Ltd 2016
Photographs * Floorplans * Virtual Tours
Tel: 0845 643 4401 www.datography.com