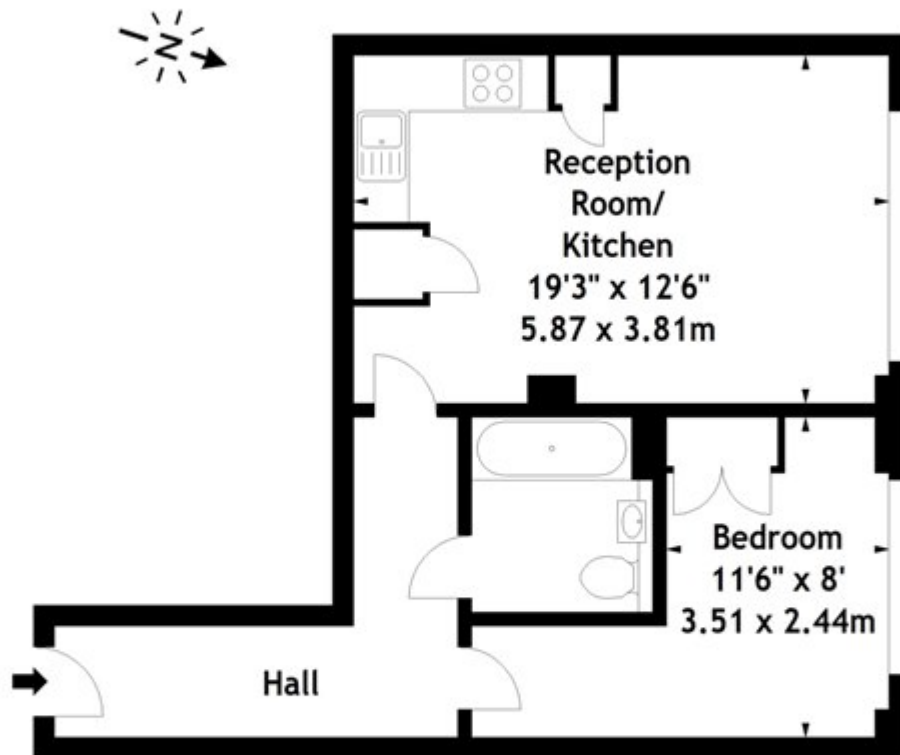


Clyde Square, London
£375,000 Leasehold

Sail Loft,
Dod Street, E14
Approx. Gross Internal Area
515 Sq Ft - 47.84 Sq M



Ground Floor

Measured in accordance with RICS guidelines. Every attempt is made to ensure accuracy, however all measurements are approximate. This floor plan is for illustrative purposes only and is not to scale.

© Datagraphy Ltd 2016

Photographs * Floorplans * Virtual Tours
Tel: 0845 643 4401 www.datagraphy.com