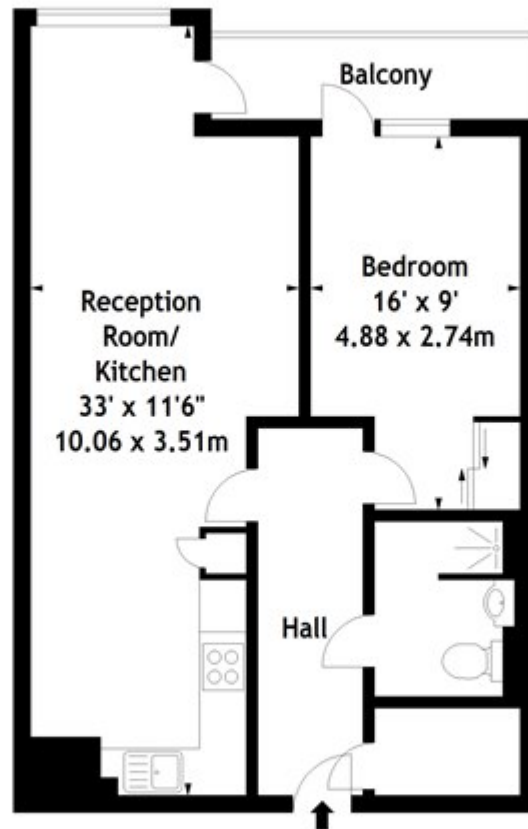


Glenthorne Road, London

£550,000 Leasehold

---

Glenbrook,  
Glenthorne Road, W6  
Approx. Gross Internal Area  
618 Sq Ft - 57.41 Sq M



Second Floor

Measured in accordance with RICS guidelines. Every attempt is made to ensure accuracy, however all measurements are approximate. This floor plan is for illustrative purposes only and is not to scale.

© Datagraphy Ltd 2016  
Photographs \* Floorplans \* Virtual Tours  
Tel: 0845 643 4401 [www.datagraphy.com](http://www.datagraphy.com)