

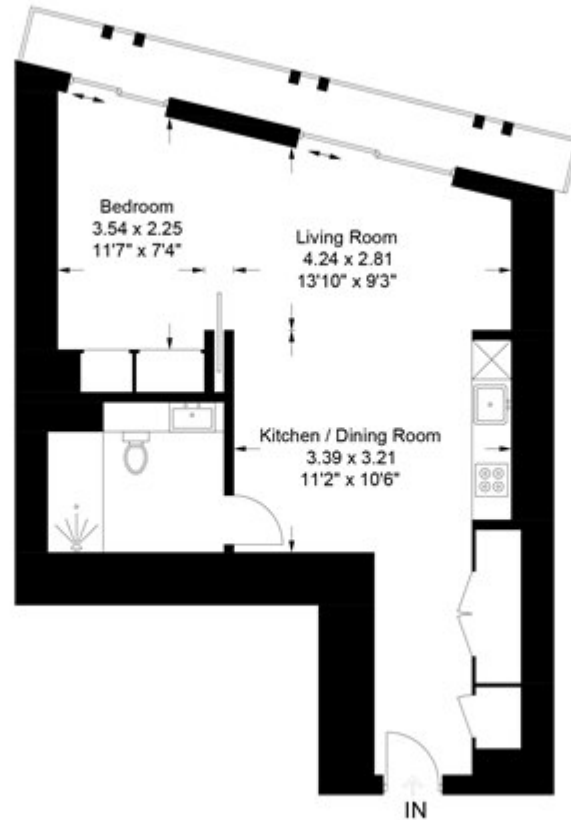
Blackfriars Road, London

£910,000 Leasehold

---

Blackfriars Bridge Road, SE1

Approximate Gross Internal Area = 51.7 sq m / 556 sq ft



Chase Evans makes every attempt to ensure accuracy, however all measurements are approximate.  
All aspects of this floor plan are for illustrative purposes only and not to scale. Errors and omissions excepted (E&OE).