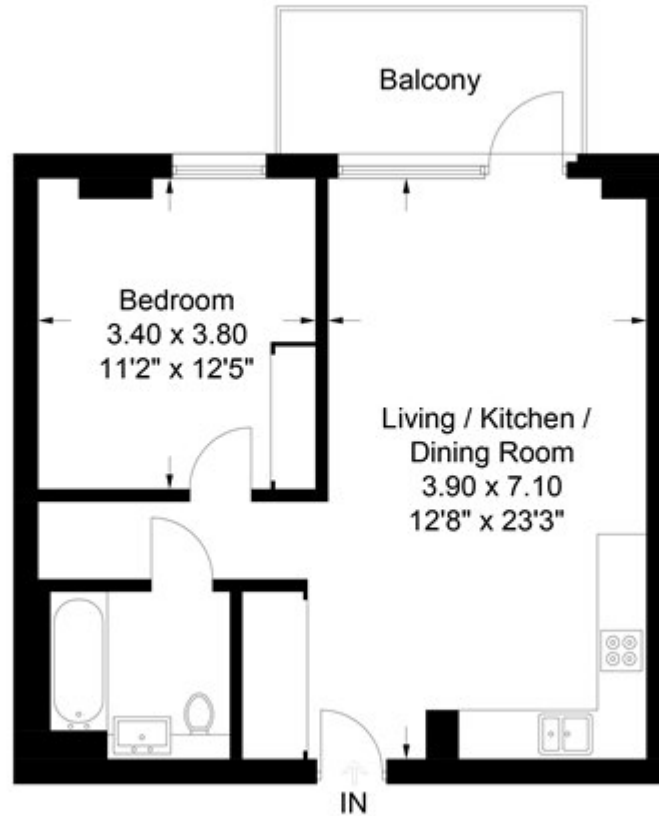


Grove Street, London

£390,000 Leasehold

The Timberyard, Cedarwood Mansions, SE8
Approximate Gross Internal Area = 51.8 sq m / 557 sq ft



Chase Evans makes every attempt to ensure accuracy, however all measurements are approximate.
All aspects of this floor plan are for illustrative purposes only and not to scale. Errors and omissions excepted (E&OE).