

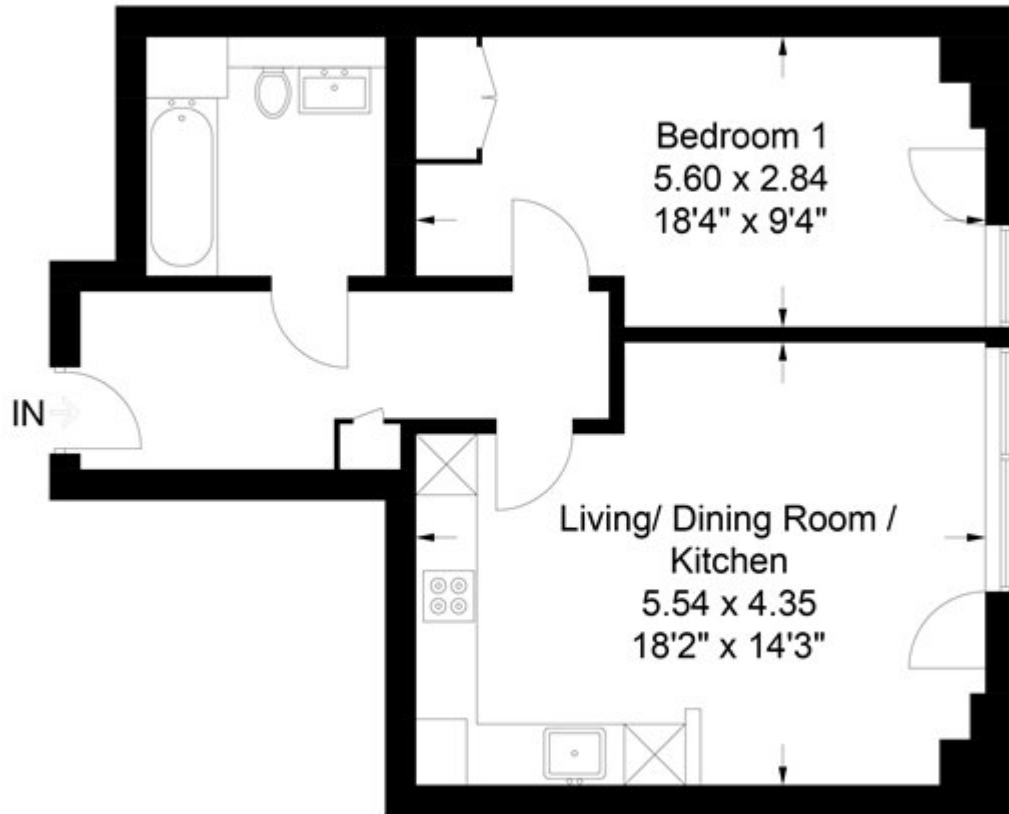
Marsh Wall, London

£490,000 Leasehold

---

The Landmark, West Tower, Canary Wharf, E14

Approximate Gross Internal Area = 49 sq m / 527 sq ft



Chase Evans makes every attempt to ensure accuracy, however all measurements are approximate.  
All aspects of this floor plan are for illustrative purposes only and not to scale. Errors and omissions excepted (E&OE).