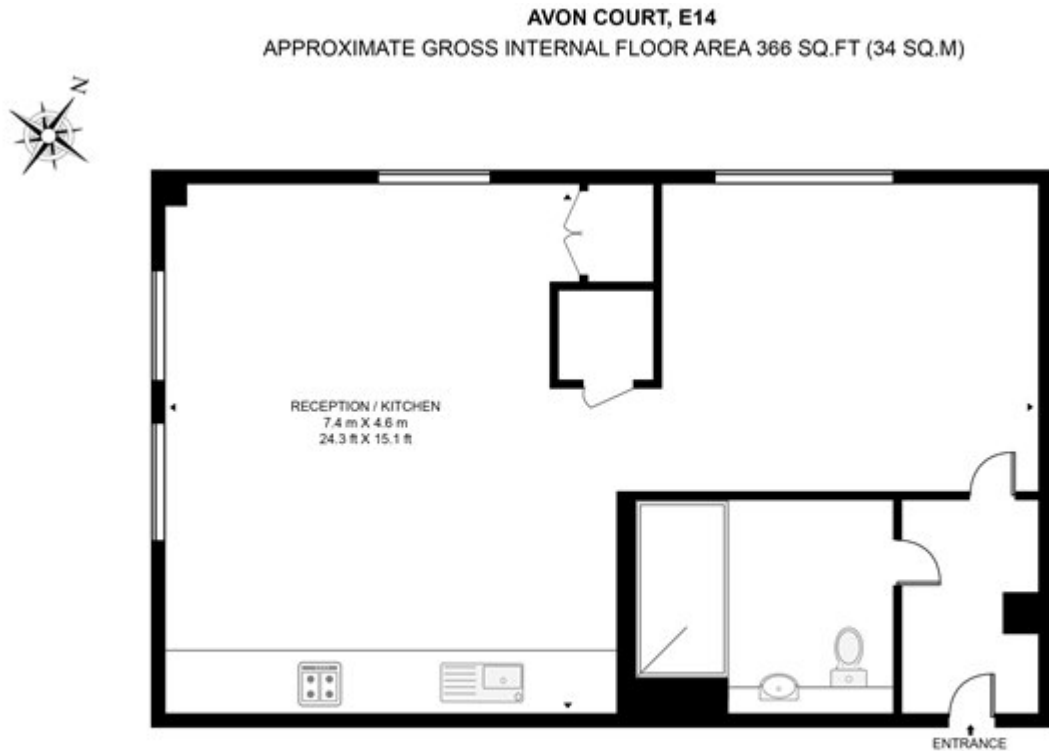


Clyde Square, London

£325,000 Leasehold

---



Whilst every attempt has been made to ensure the accuracy of the floor plan contained here, measurements of door, windows, rooms and any other items are approximate and no responsibility is taken for any error, omission, or mis-statement. The plan for illustrative purposes only and should be used as such by any prospective purchaser. The services, system and appliances shown have not been tested and no guarantee as to their operability or efficiency can be given.