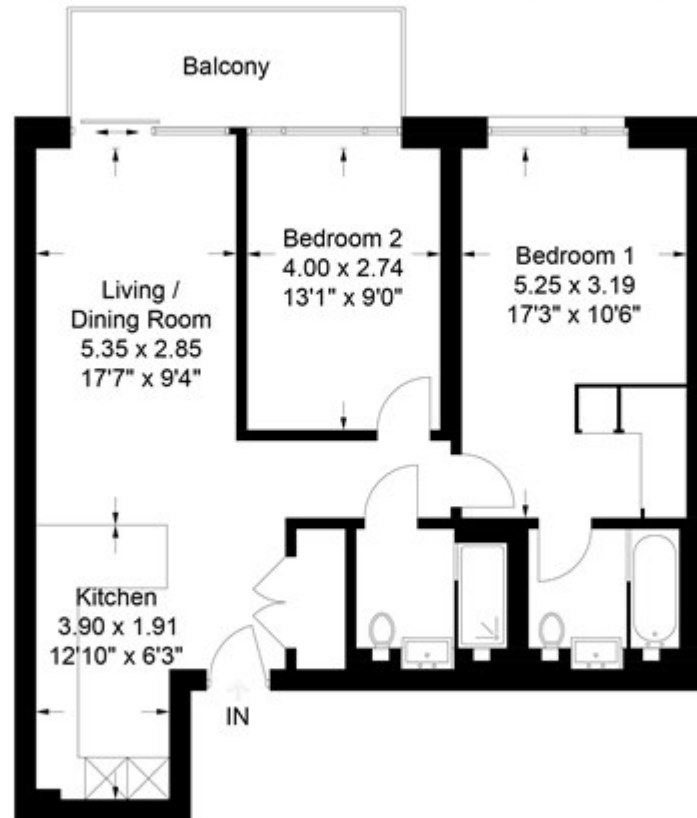


Duke Of Wellington Avenue, London

£630,000 Leasehold

Duke Of Wellington Avenue, SE18

Approximate Gross Internal Area = 73.3 sq m / 790 sq ft



Chase Evans makes every attempt to ensure accuracy, however all measurements are approximate.
All aspects of this floor plan are for illustrative purposes only and not to scale. Errors and omissions excepted (E&OE).