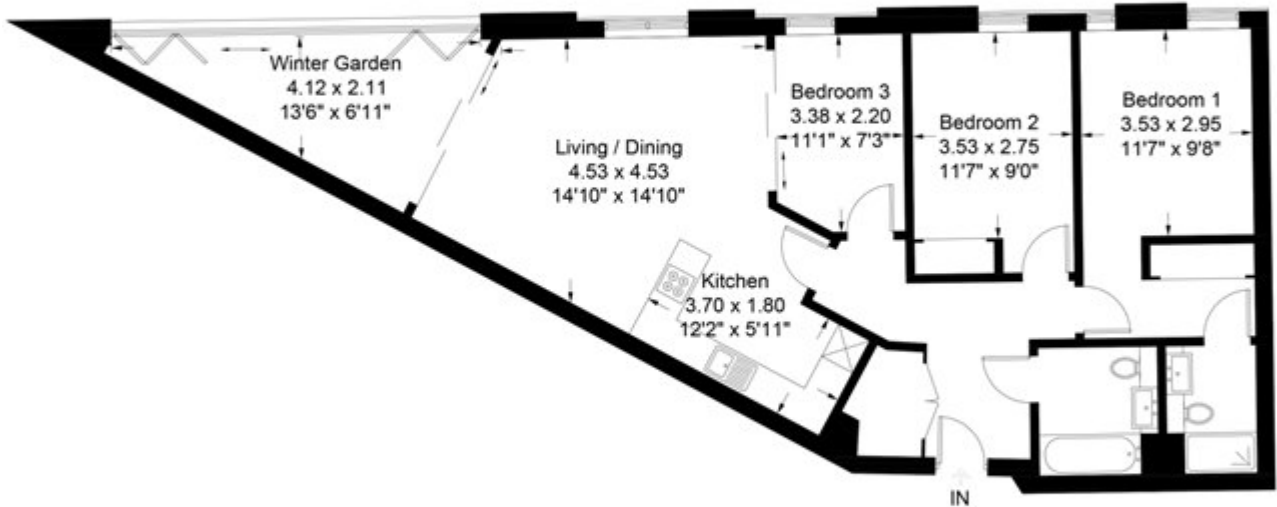


New Drum Street, London

£1,125 PW

Wiverton Tower, Aldgate Place, E1

Approximate Gross Internal Area = 86.9 sq m / 936 sq ft



Chase Evans makes every attempt to ensure accuracy, however all measurements are approximate.
All aspects of this floor plan are for illustrative purposes only and not to scale. Errors and omissions excepted (E&OE).