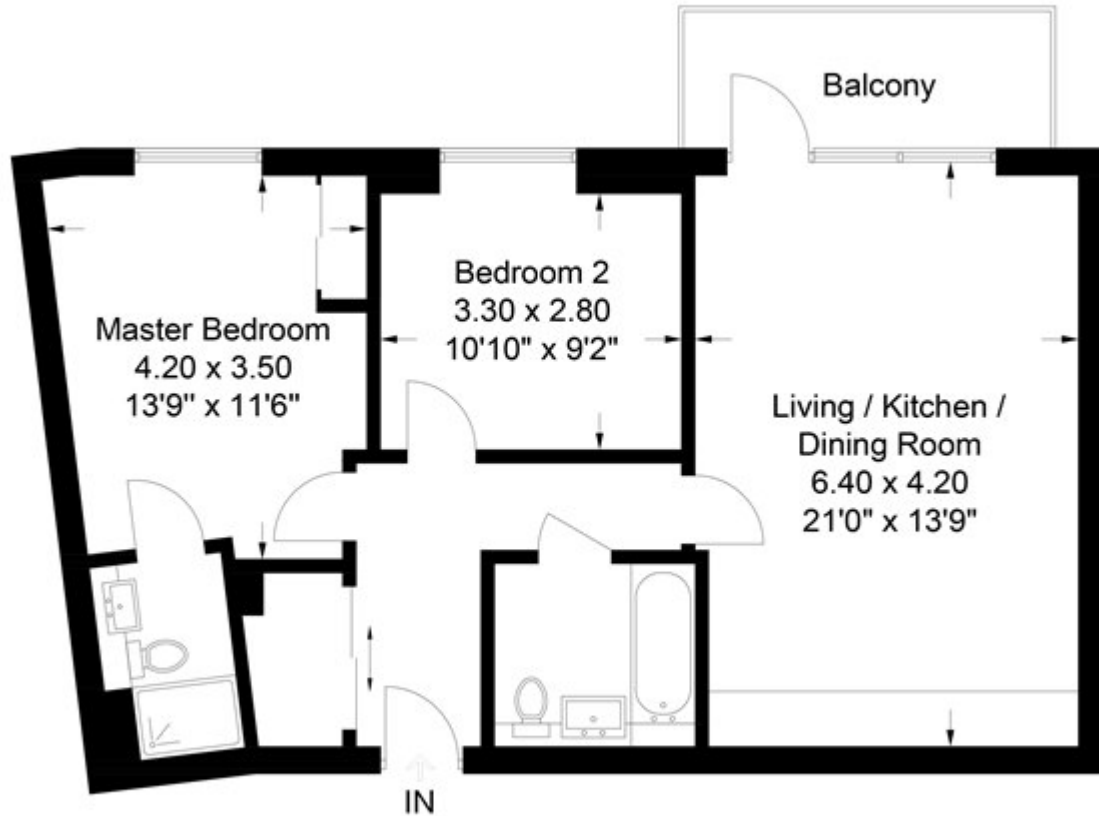


Lyon Road, London

£520,000 Leasehold

Baldwin Court Lyon Road, HA1

Approximate Gross Internal Area = 67.4 sq m / 725 sq ft



Chase Evans makes every attempt to ensure accuracy, however all measurements are approximate.
All aspects of this floor plan are for illustrative purposes only and not to scale. Errors and omissions excepted (E&OE).