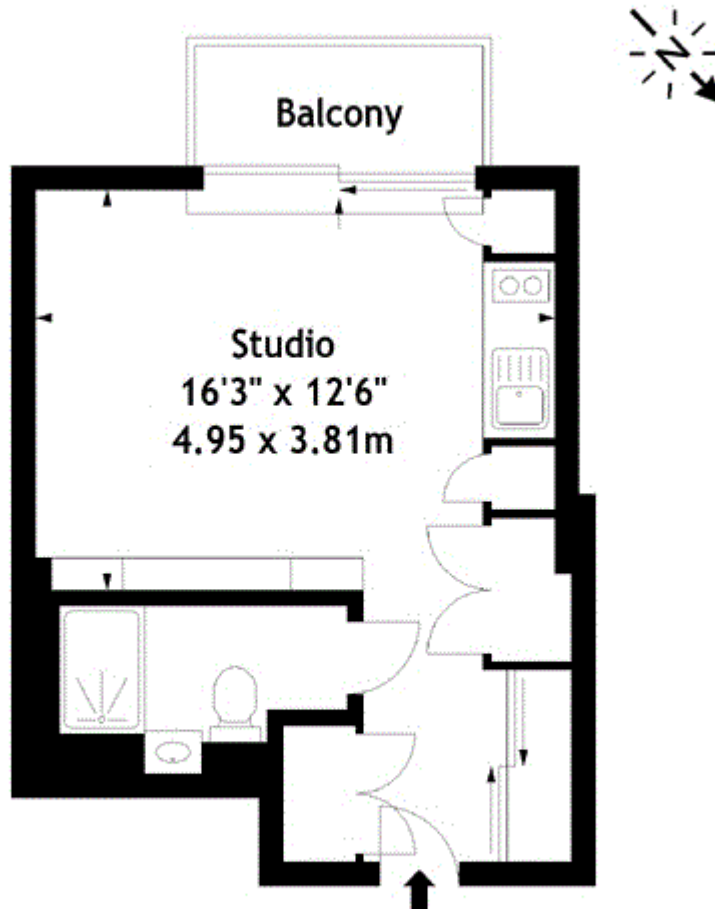


Pan Peninsula Square, London

£340,000 Leasehold

West Tower Pan Peninsula, E14
Approx. Gross Internal Area
314 Sq Ft - 29.17 Sq M



Measured in accordance with RICS guidelines. Every attempt is made to ensure accuracy, however all measurements are approximate. This floor plan is for illustrative purposes only and is not to scale.

© Datography Ltd 2016

Photographs * Floorplans * Virtual Tours
Tel: 0845 643 4401 www.datography.com