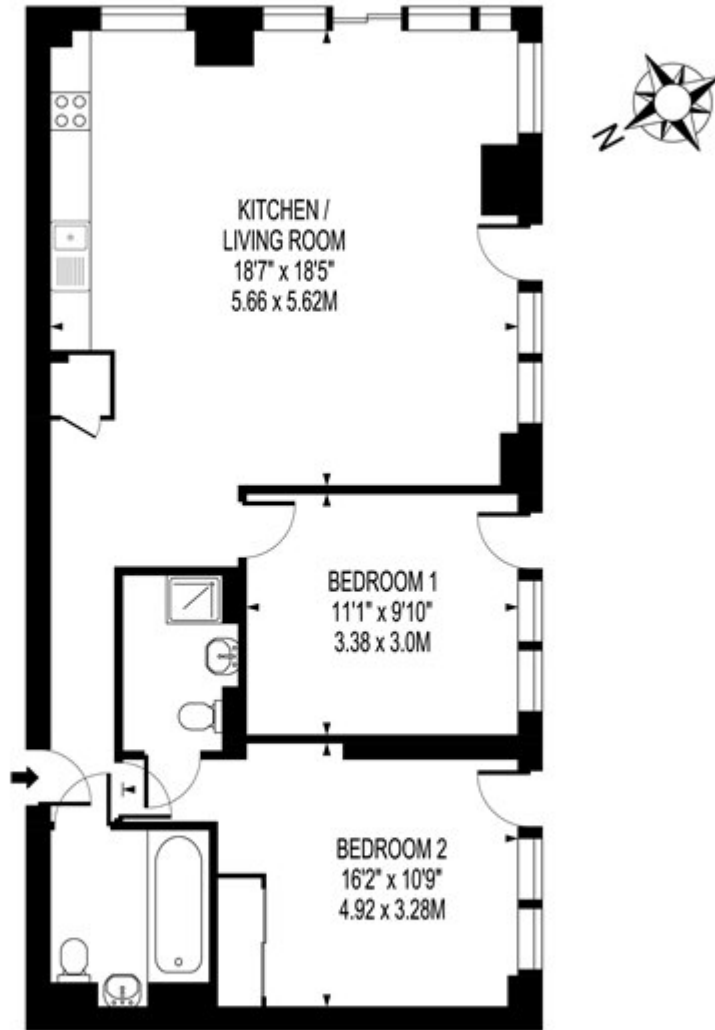


Great Eastern Road, London

£625 PW

STRATOSPHERE TOWER

APPROXIMATE GROSS INTERNAL FLOOR AREA: 761 SQ FT- 70.70 SQ M



TWENTIETH FLOOR

FOR ILLUSTRATION PURPOSES ONLY

THIS FLOOR PLAN SHOULD BE USED AS A GENERAL OUTLINE FOR GUIDANCE ONLY AND DOES NOT CONSTITUTE IN WHOLE OR IN PART AN OFFER OR CONTRACT.
ANY INTENDING PURCHASER OR LESSEE SHOULD SATISFY THEMSELVES BY INSPECTION, SEARCHES, ENQUIRIES AND FULL SURVEY AS TO THE CORRECTNESS OF EACH STATEMENT.
ANY AREAS, MEASUREMENTS OR DISTANCES QUOTED ARE APPROXIMATE AND SHOULD NOT BE USED TO VALUE A PROPERTY OR BE THE BASIS OF ANY SALE OR LET.

Viewings via: Chase Evans, Horizon Building, 15 Hertsmere Road, London, E14 4AW