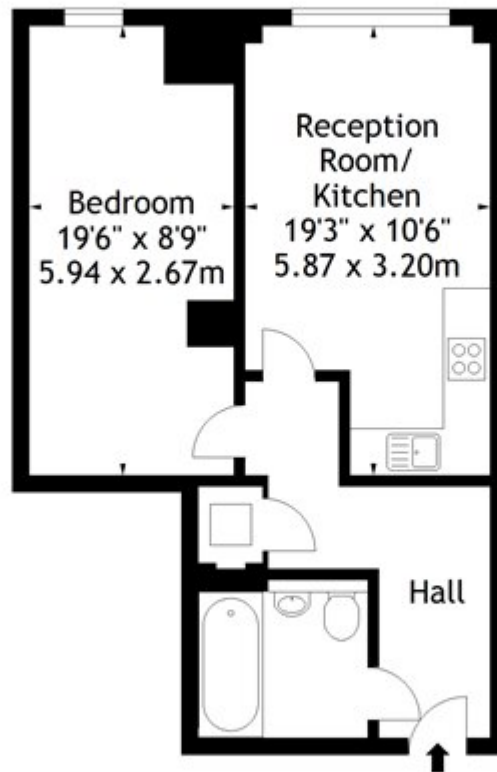


Clyde Square, London

£430 PW

Sail Loft Court,
Dod Street, E14
Approx. Gross Internal Area
520 Sq Ft - 48.31 Sq M



Ground Floor

Measured in accordance with RICS guidelines. Every attempt is made to ensure accuracy, however all measurements are approximate. This floor plan is for illustrative purposes only and is not to scale.

© Datography Ltd 2016
Photographs * Floorplans * Virtual Tours
Tel: 0845 643 4401 www.datography.com