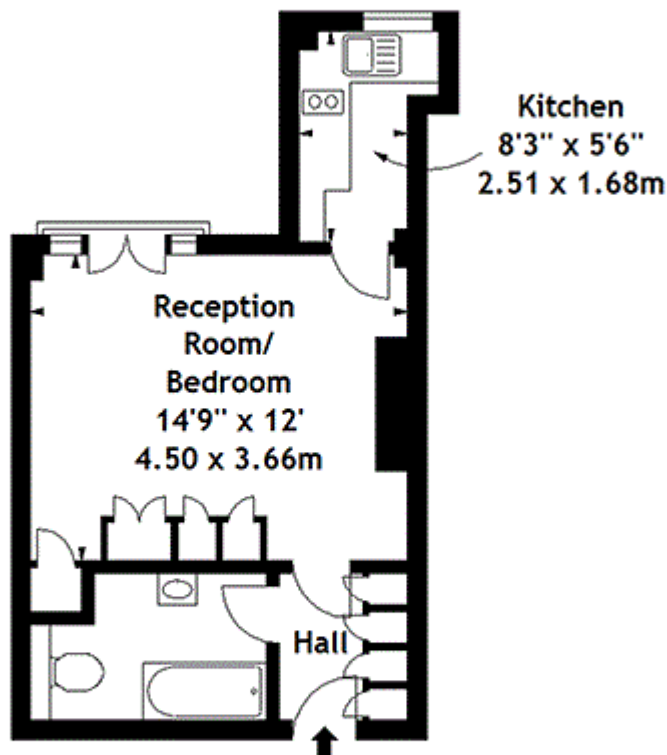


Edgware Road, London

£450 PW

Edgware Road,
Forest Court, W2
Approx. Gross Internal Area
308 Sq Ft - 28.61 Sq M



Sixth Floor

drawn in accordance with RICS guidelines. Every attempt is made to ensure accuracy, however all measurements are approximate. This floor plan is for illustrative purposes only and is not to scale.

© Datagraphy Ltd 2013

Photographs * Floorplans * Virtual Tours
Tel: 0845 643 4401 www.datagraphy.com