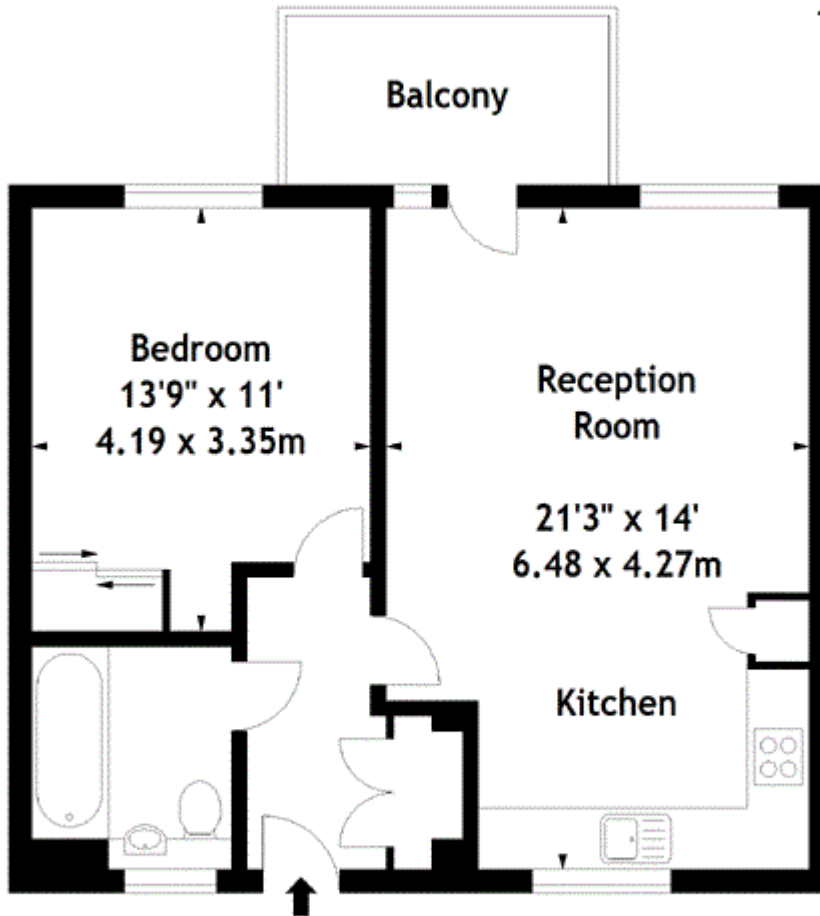


West Row, London

£450 PW

Atrium Apartments, W10  
Approx. Gross Internal Area  
543 Sq Ft - 50.44 Sq M



First Floor

Measured in accordance with RICS guidelines. Every attempt is made to ensure accuracy, however all measurements are approximate. This floor plan is for illustrative purposes only and is not to scale.

© Datagraphy Ltd 2016

Photographs \* Floorplans \* Virtual Tours  
Tel: 0845 643 4401 [www.datagraphv.com](http://www.datagraphv.com)