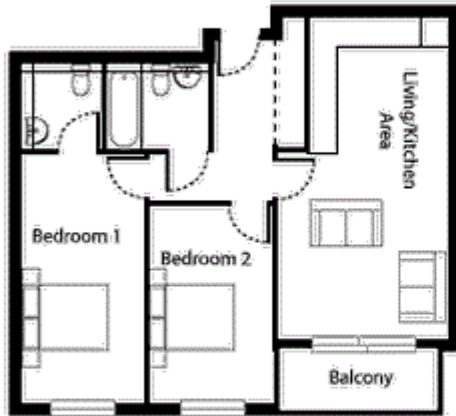


Holman Road, Battersea

£530 PW



Sesame Apartments
Battersea, SW11
Approx. Gross Internal Area
741sq ft = 68.9 sq m

Living/Kitchen 23'4" x 12'6"

Bedroom 1 17'9" x 8'10"

Bedroom 2 14'1" x 8'10"



Every attempt is made to ensure accuracy, however all measurements are approximate.
This floor plan is for illustrative purposes only and not to scale. Errors and omissions
excepted (E&OE).