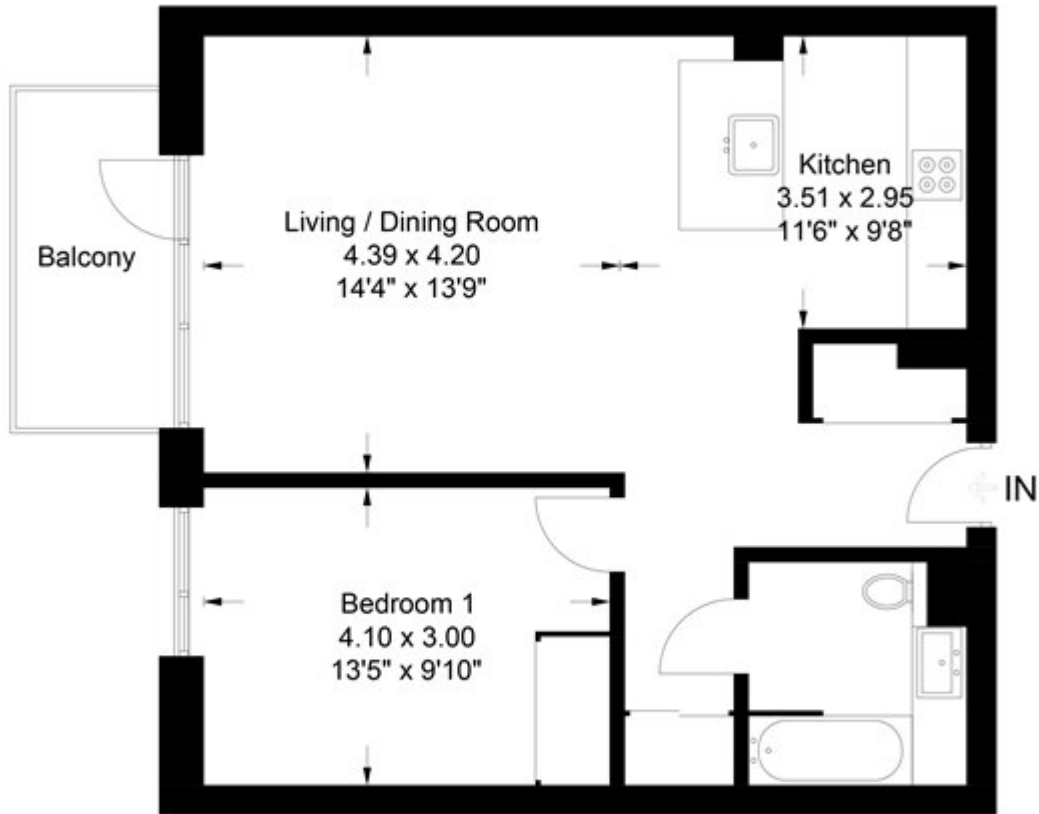


Fountain Park Way, London

£650 PW

White City, Living Fountain, Park Way, W12

Approximate Gross Internal Area = 57.8 sq m / 622 sq ft



Chase Evans makes every attempt to ensure accuracy, however all measurements are approximate.  
All aspects of this floor plan are for illustrative purposes only and not to scale. Errors and omissions excepted (E&OE).