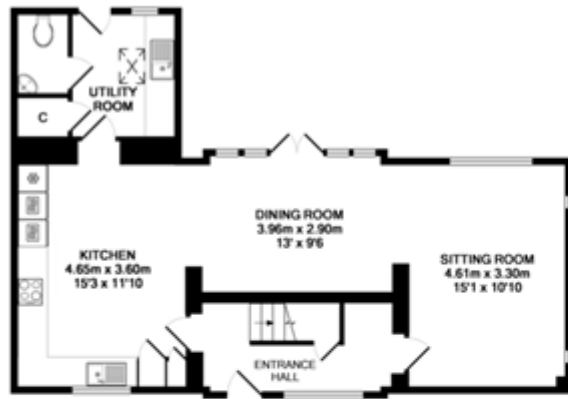


Blacksmiths Lane, Kidlington

£1,750 PCM



GROUND FLOOR



1ST FLOOR

TOTAL APPROX. FLOOR AREA 121.8 SQ.M. (1311 SQ.FT.)

Whilst every attempt has been made to ensure the accuracy of the floor plan contained here, measurements of doors, windows, rooms and any other items are approximate and no responsibility is taken for any error, omission, or misstatement. This plan is for illustrative purposes only and should be used as such by any prospective purchaser. Drawn by E3 Property Services - www.e3ps.co.uk
Made with Metropix 62016