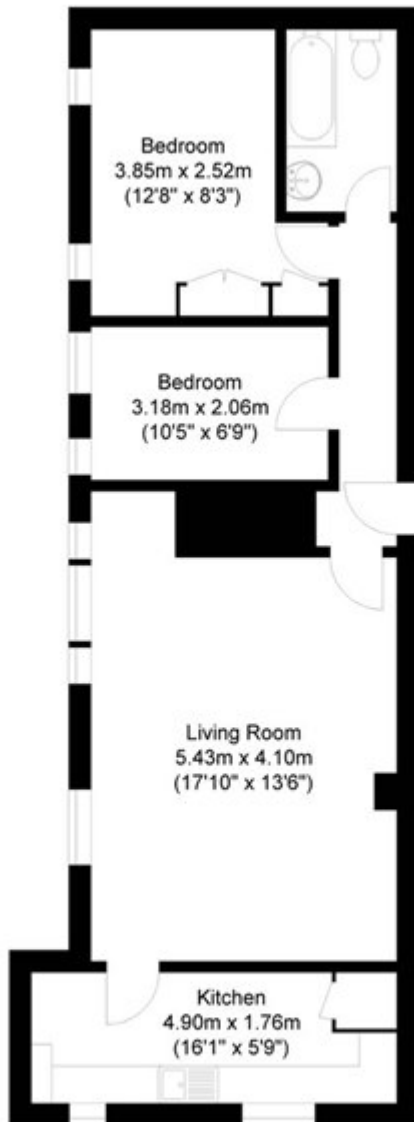


Commercial Street, London

Guide Price £599,500 Leasehold

The Cloisters, Commercial Street, E1



Top Floor
Approximate 60.61 sq meter
(652.40 sq feet)

Illustration for identification purposes only, measurements are approximate, not to scale.
Approximate Gross Internal Area = 60.61 sq meter (652.40 sq feet)