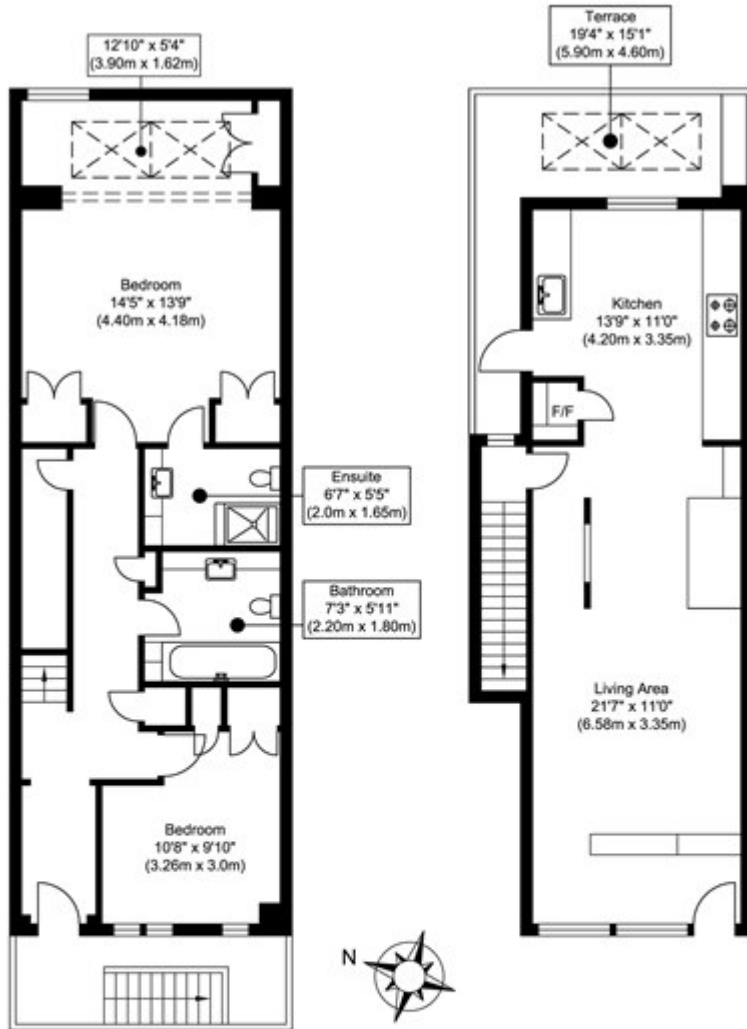


Gray's Inn Road, London

£575 PW



Lower Ground Floor
Approximate Floor Area
658.10 sq. ft.
(61.14 sq. m)

Ground Floor
Approximate Floor Area
498.90 sq. ft.
(46.35 sq. m)

Total Gross Internal Area
Approximate Floor Area
1157.01 sq. ft.
(107.49 sq. m)

Gray's Inn Road

Whilst every attempt has been made to ensure the accuracy of the floor plan contained here, measurements of doors, windows, rooms and any other items are approximate and no responsibility is taken for any error, omission, or mis-statement. This plan is for illustrative purposes only and should be used as such by any prospective purchaser or tenant. The services, systems and appliances shown have not been tested and no guarantee as to their operability or efficiency can be given.