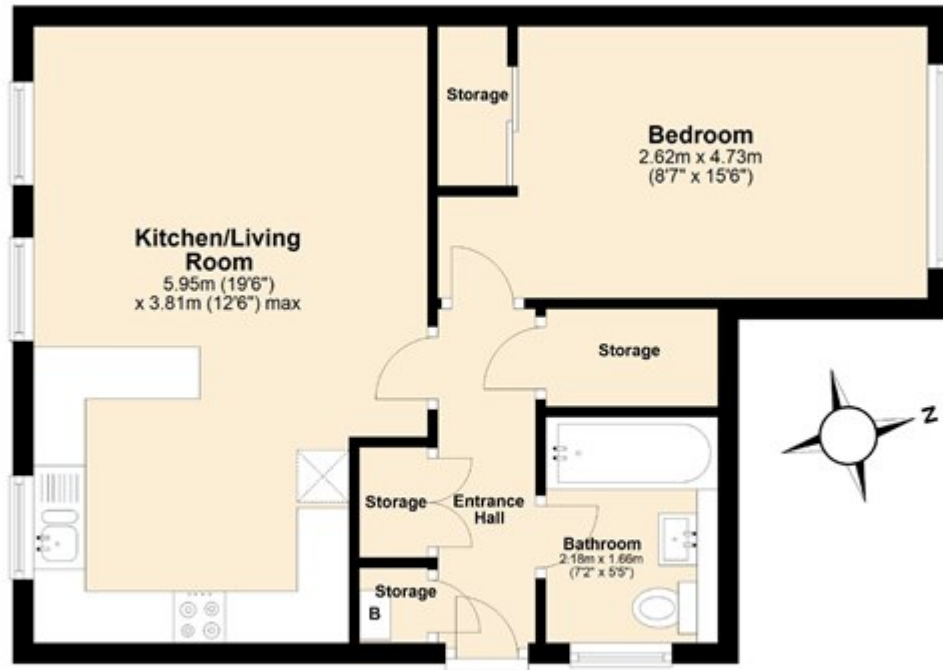


Waldegrave Park, Harpenden

£239,950 Leasehold

Ground Floor

Approx. 44.6 sq. metres (480.2 sq. feet)



Total area: approx. 44.6 sq. metres (480.2 sq. feet)

Disclaimer - Floor plan is for marketing purposes only and is to be used as a guide. The total square area does not include a garage.
Plan produced using PlanUp.