

High Street, Sandridge

£425,000 Freehold

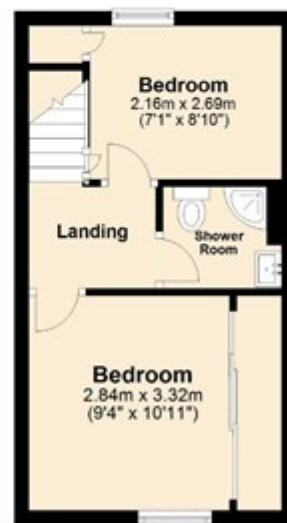
Ground Floor

Approx. 28.9 sq. metres (311.5 sq. feet)



First Floor

Approx. 23.6 sq. metres (254.0 sq. feet)



Total area: approx. 52.5 sq. metres (565.5 sq. feet)

Disclaimer - Floor plan is for marketing purposes only and is to be used as a guide - SKM Studio
Plan produced using PlanUp.