

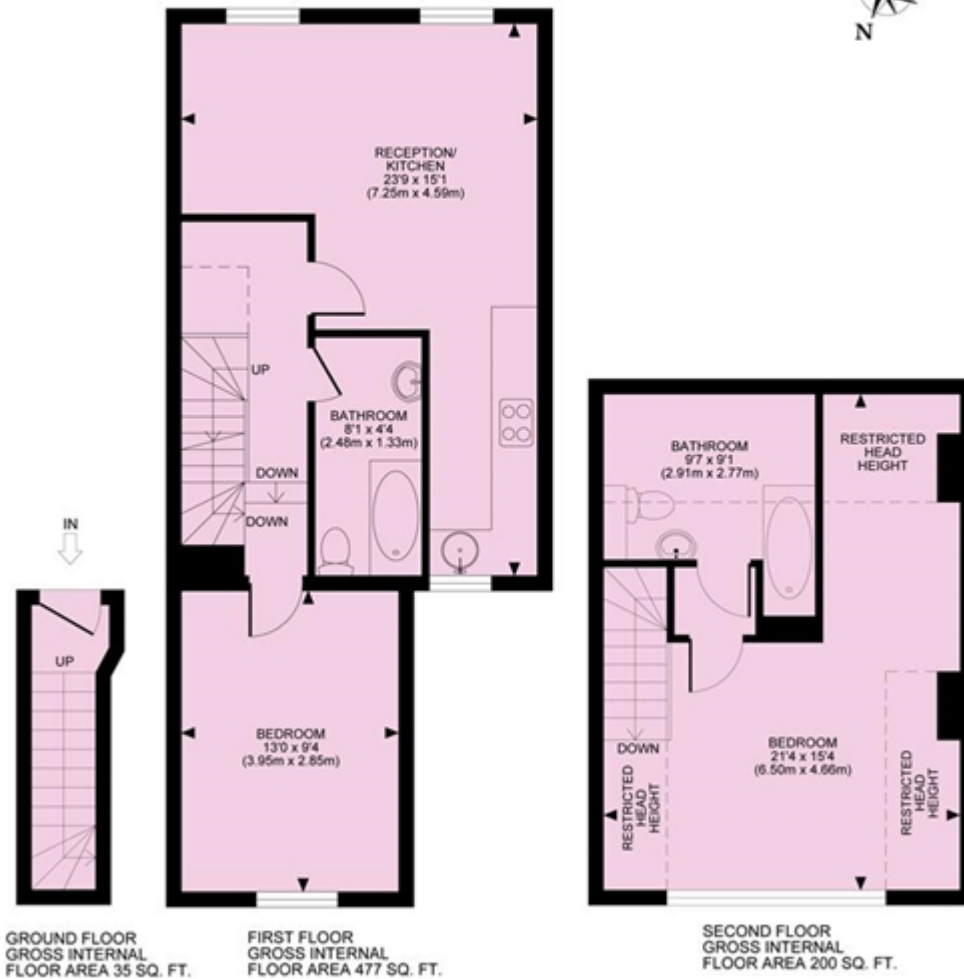
Valliere Road, London

Offers over £500,000



VALLIERE ROAD, NW10

TOTAL APPROX. FLOOR PLAN AREA 712 SQ.FT. (66 SQ.M.)
(EXCLUDING RESTRICTED HEAD HEIGHT)
----- = RESTRICTED HEAD HEIGHT



All measurements walls, doors, windows, fittings and their appliances, their size and locations are shown conventionally and are approximate only and cannot be regarded as being a representation either by the seller or his agent nor zentuvo
www.zentuvo.co.uk