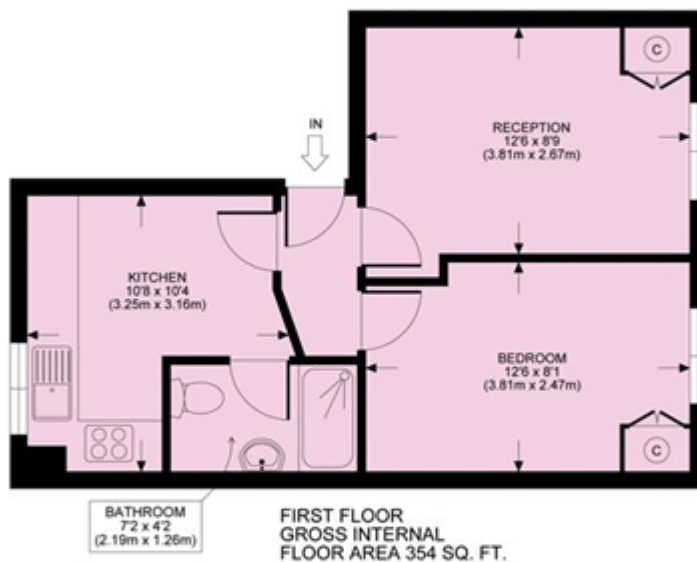


Station Terrace, Kensal Rise

£1,450 PCM



STATION TERRACE, NW10
TOTAL APPROX. FLOOR PLAN AREA 641 SQ.FT. (60 SQ.M.)



All measurements walls, doors, windows, fittings and their appliances, their size and locations are shown conventionally and are approximate only and cannot be regarded as being a representation either by the seller or his agent nor zentuvo
www.zentuvo.co.uk

Station Terrace, Kensal Rise

£1,450 PCM



STATION TERRACE, NW10
TOTAL APPROX. FLOOR PLAN AREA 641 SQ.FT. (60 SQ.M.)



FIRST FLOOR
GROSS INTERNAL
FLOOR AREA 354 SQ. FT.



All measurements walls, doors, windows, fittings and their appliances, their size and locations are shown conventionally and are approximate only and cannot be regarded as being a representation either by the seller or his agent nor zentuvo
www.zentuvo.co.uk