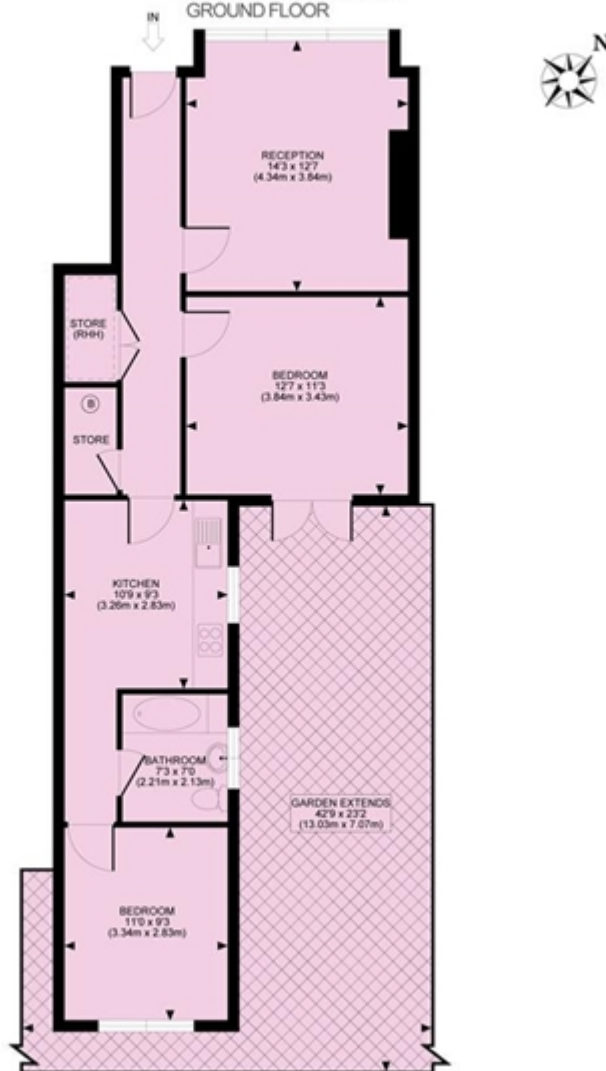


Ash Grove, Cricklewood

£550,000



ASH GROVE, NW2
TOTAL APPROX. FLOOR PLAN AREA 697 SQ.FT. (65 SQ.M.) (EXCLUDING RESTRICTED HEAD HEIGHT)
----- = RESTRICTED HEAD HEIGHT
GROUND FLOOR



All measurements walls, doors, windows, fittings and their appliances, their size and locations are shown conventionally and are approximate only and cannot be regarded as being a representation either by the seller or his agent nor zentuvo
www.zentuvo.co.uk

Ash Grove, Cricklewood

£550,000

WARWICK
ESTATE AGENTS

25 YEARS
EXPERIENCE

ASH GROVE, NW2

TOTAL APPROX. FLOOR PLAN AREA 697 SQ.FT. (65 SQ.M.) (EXCLUDING RESTRICTED HEAD HEIGHT)

----- = RESTRICTED HEAD HEIGHT
GROUND FLOOR



All measurements walls, doors, windows, fittings and their appliances, their size and locations are shown conventionally and are approximate only and cannot be regarded as being a representation either by the seller or his agent nor zentuvo
www.zentuvo.co.uk